

# Discover infinite possibilities with **colours**

---

IDEA BOOK (VOL. III)



**VENTURA**  
Premium Architectural Surfaces  
Since 1994



**valchromat**  
Wood Based Solid Surface Panel  
From Portugal



# CONTENT

---

01 / **About Valchromat**

03 / **Valchromat Benefits**

05 / **Out of the Box Application**

39 / **Valchromat Range Availability**

41 / **Valchromat Standards and Properties**

43 / **Environmental Responsibility & Certification**

44 / **Valchromat Facts**

47 / **Valchromat Installation**

# About Valchromat

Ventura is a name synonymous with avant-garde and innovative interior products. It is the leading importer and marketing company in India specializing in Premium Architectural Surfaces related products from leading international manufacturers. Ventura's product range is best captured in a unique category of its own, perhaps the only one of its kind in the world: "Interior Lifestyle Products". Ventura continues to introduce innovative products and Valchromat®, a unique solid surface wood based panel from Investwood, Portugal, is yet another instance of its commitments to customer delight.

Use your imagination. Find your limits.

What do you get when you combine the natural features of wood with bright colours? You get brand new ideas for your ultra-premium interior design projects!

That's what Valchromat® is about: the various textures of wood, and a wide range of colours that will unleash your creativity. All this with the best of engineering that delivers top-notch quality that your clients are accustomed to.

From kitchens, bathrooms, floors, decorative panels, and walls to restaurants, bars, hotels, stores, and malls, Valchromat® empowers you to design and deliver nothing but the best and the trendiest of spaces.

In order to complement your design aspirations, Ventura is proud to present the VALCHROMAT BOOK OF IDEAS VOLUME III. This book contains applications/pictures courtesy architects/designers both Indian and International. Flip through this book to give your ideation process a nudge or a jump when you need it. We are sure a texture here, a colour there, a combination here or a contrast there will get your creative juices going. These textures and colours give your interior an awe inspiring look.

Do reach out to us in case you need any support to enable your design process. Our team of experts in finishes would be happy to iron out the details of your concepts.

We would like to showcase maximum Indian applications of Valchromat® in our next edition of Book of Ideas. Hence, we request you to provide us with your new creative applications.

Welcome to the world of ideas.



# valchromat®

## Benefits



**Coloured Throughout**  
Each fibre of wood is coloured separately.



**Fire Retardant**  
Valchromat's fibre panels are flame retardant.



**Tool Friendly**  
Valchromat is a low abrasion product.



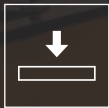
**All Finishes Possible**  
The surfaces allow all kinds of polishing, paints, and overlay.



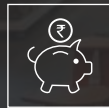
**Diversified**  
Available in 11 colours and 7 thicknesses.



**Natural Appearance**  
It looks like natural timber but with zero wood defect.



**Greater Load Resistance**  
It has a high bending resistance.



**Saves Time And Labour**  
It ensures quick execution or fabrication.



**Lasting Colours**  
Its colours are sunlight and artificial light resistant.



**Mechanical Strength**  
On an average, it is 30% stronger than the standard MDF.



**Moisture Resistant**  
The boards are resistant to moisture.



**Non-Toxic**  
Formaldehyde emissions are as per European standards.



Chocolate Brown, Black, Grey, Light Grey, Yellow, Orange, Violet and Blue Valchromat® furniture and shopfitting Studio dLux | Brazil



Mint Green Valchromat, Itinerante, Portugal





Grey & Yellow Valchromat, Superjet International, U.K.



Black & Grey Valchromat, Layers, Sweden



Red, Yellow, Blue Valchromat, Studio dLux, Brazil





Yellow Valchromat, Ritu Wears, India





Black, Yellow, Light Grey and Red Valchromat, Plano Geometrico, France





Grey, Light Grey, Black, Yellow, Orange, Blue, Red, Violet, Mint Green & Chocolate Brown Valchromat, Meraqee Showroom, India



Grey & Black Valchromat, Francois Coussement, Swissartis, Morocco





Orange, Violet, Mint Green, Light Grey, Yellow Valchromat  
Studis Dlux, Brazil



Light Grey Valchromat, Timberireland, Ireland



Black Valchromat, James Latham, UK.



Grey, Black, yellow Valchromat, House in Brage, Brazil





Light Grey, Black & Yellow Valchromat, Bainart Luxe, Brazil



Chocolate Brown, Violet, Black & Red Valchromat, Bainart Luxe, Brazil



Yellow, Violet Valchromat, Studis, Dlux, Brazil



Violet, Orange, Grey Valchromat, French Woodworks Company, France





Light Grey Valchromat, Choupana Caffé, Portugal



Light Grey, Black & Yellow Valchromat, Choupana Caffé, Portugal



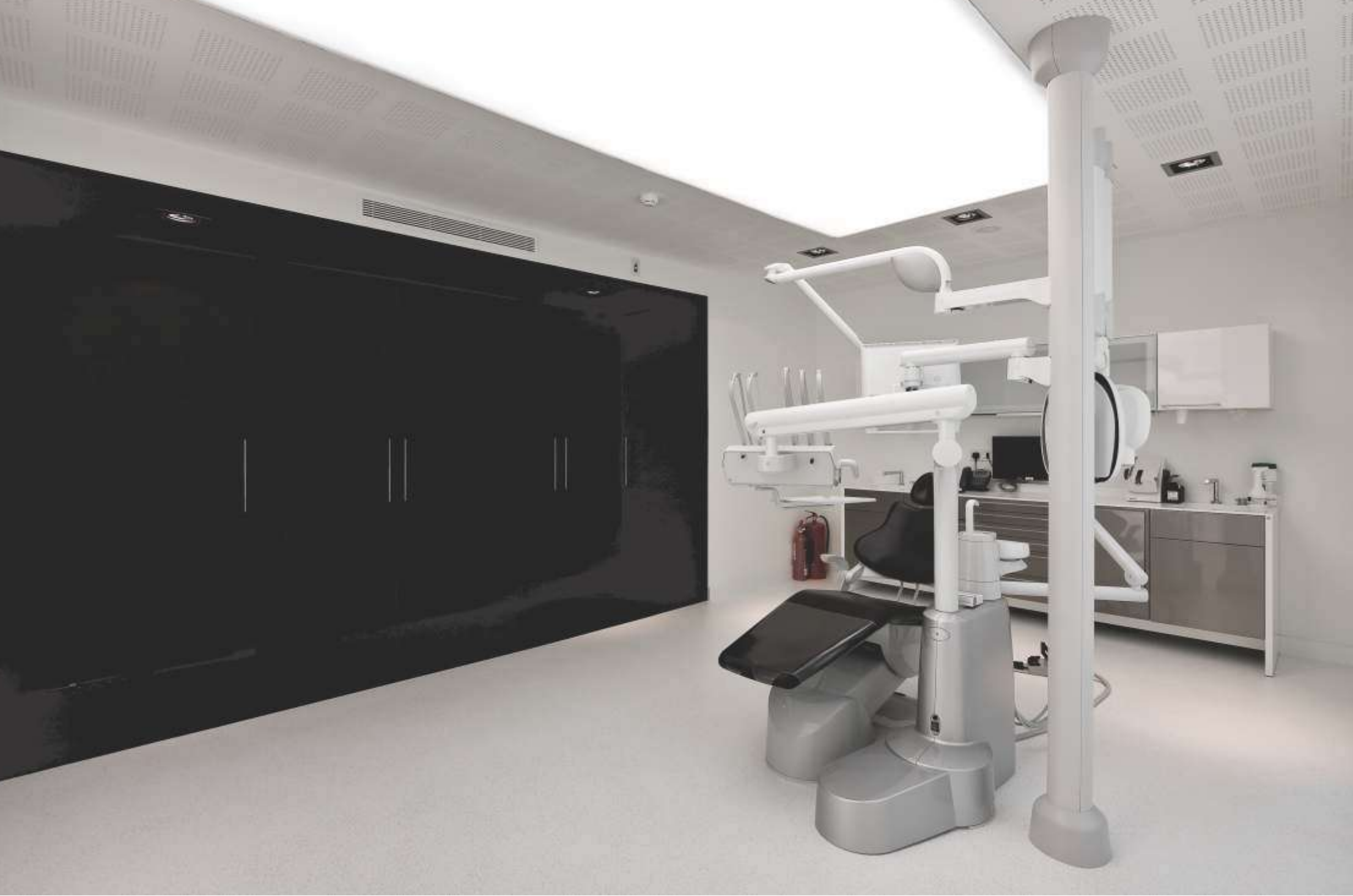
Black Valchromat, Choupana Caffé, Portugal





Black, Chocolate Brown, Light Grey, Orange  
Yellow, Grey & Red Valchromat, The Grid Game, Mexico





Black, Light Grey Valchromat, Brighton Implant Clinic, U.K.



Red, Yellow, Black & Grey Valchromat, CCB showroom, Portugal



Light Grey, Brown and Chocolate Brown Valchromat, BainArt Luxe, Brazil



Grey & Light Grey Valchromat, Architectural Experience Centre, India





Black & Light Grey Valchromat, InterSource SpecialtiesCo., USA



18 **VA** 24  
VISTA ALEGRE  
Atlantis  
PORTUGAL

Light Grey Valchromat, Vista Alegre, Portugal





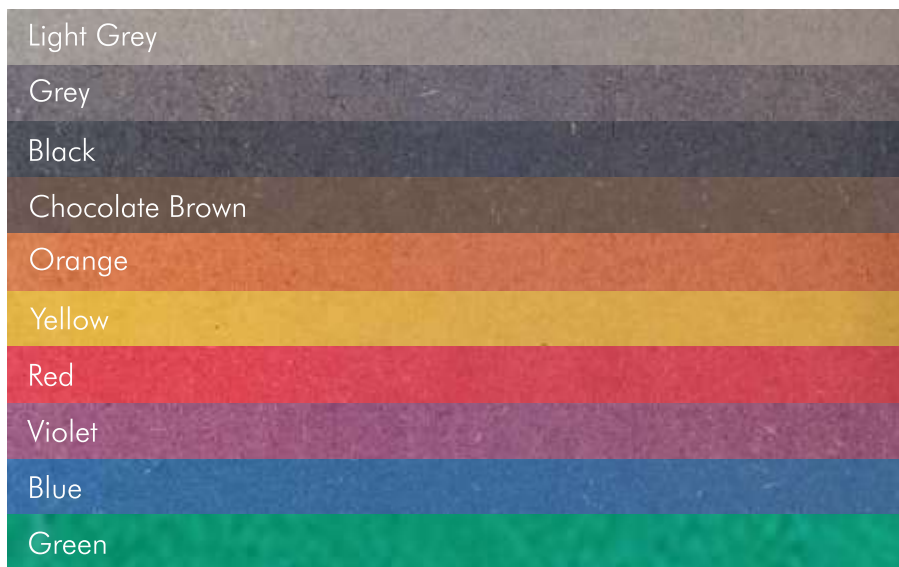
Light Grey Valchromat, Meraqee Showroom, India



Black, Grey Valchromat, Ray'z Bar - Gusto U.K.

# valchromat® RANGE AVAILABILITY

## Colours



## Thickness

8	12	19	30
8	12	19	30
8	12	19	30
8	12	19	30
8	12	19	30
8	12	19	30
8	12	19	30
8	12	19	30
8	12	19	30
8	12	19	30

## Dimension (mm)

2440 x 1220

### NOTE:

- Small light brown pine chips are visible at random, throughout a sheet of Valchromat board adding to its unique natural looks.
- Whilst variance in colour remains within acceptable parameters, according to cielab norms allied to data colours software, it is important to note that slight variation may occur. This is due to the natural pine fibres and organic dyes not aggressive to the environment.
- Tonal variance will occur with different finishing applications.



Grey & Blue Valchromat, Melver Furniture, East Sussex.



# valchromat® STANDARDS & PROPERTIES

## Standards

Product Basis in Accordance with European Standards	
Density	EN 323
Swelling (24 hours)	EN 317
Internal bond	EN 319
Bending Strength	EN 310
Modulus Elasticity	EN 310
Swelling after Cyclic Test	EN 321
Internal Bond after Cyclic Test	EN 321
Formaldehyde	EN 120

## Properties

Thickness (mm)						
Feature	Unit	8	12	19	25	30
Swelling (24 hours)	%	12	10	8	7	7
Internal Bond	N/mm2	0.80	0.80	0.75	0.75	0.75
Bending Strength	N/mm2	34	32	30	28	28
Modulus of Elasticity	N/mm2	3000	2800	2700	2600	2600
Swelling after Cyclic Test	%	19	16	15	15	15
Internal bond after Cyclic Test	N/mm2	0.30	0.25	0.20	0.15	0.15

## Standards

Cyclic Tests, Hydrophobic Test Standard (EN 321)	Temperature (c°)	Length (hours)
In the Water	20±1	
In the Freezer	-12 a -25	
In the Oven	20±1	

## Valchromat Finishings

Valchromat accepts different types of finishes: varnish (matte, glossy, aqueous polyurethane, UV resistant, fire resistant etc.), wax and oils. From more information read our product data sheet. Very importantly: finishes, fixing systems and uses are identical to those used for wood. Before any finish, it is necessary to do a convenient preparation of Valchromat with quality abrasives.

- Slightly sand the surface, verifying that you are using the same process in each panel –the shade is more stronger in the surface than within the panel.
- Remove carefully all the dust on the surface, and apply the finishing. Pay attention to dust, even on the air, it can change the final panel aspect.

### Varnishes

Types of finishes: gloss, semi-gloss, matte

- SIRCA – International.
- ICA – International.

### Waxes

Types of finishes: gloss, semi-gloss, matte

- DIVERSEY
- CIRANOVA

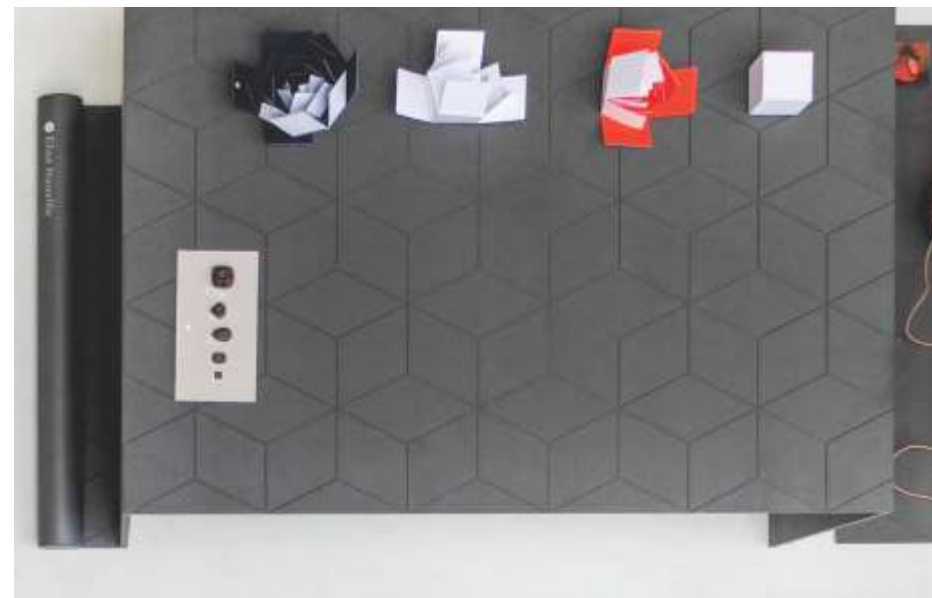
### Oils

Types of finishes: matte

- RUBIO MONOCOAT

For Valchromat efficient use and conservation, it is recommended to :

- Stack the panels horizontally, without contact with the ground.
  - Protect the panels until use.
  - Cut with properly sharpened tools.
  - Handle with care to prevent working accidents.
- Due to natural variation of the wood's hue, the panels can also present some colour variation among themselves or between each of their faces.
- To prevent this situation, it is recommended the following precautions :
- Select the panels before starting the work, as it is made with wooden sheets and planks.
  - Wherever possible, use planks from a single batch for each job.



# ENVIRONMENTAL RESPONSIBILITY & CERTIFICATION

Investwood, Portugal, is aware of the environmental implications of its industrial activity. It intends to contribute to a sustainable development, by using a responsible strategy and insuring it continuously.

Bearing these principles in mind, we have developed Valchromat® to be as ecological as possible. Valchromat's color is obtained by adding organic dyes, which are non-toxic. Since the concept stage, back in 1996, Formaldehyde emissions were taken into consideration and we developed a binding resin that ensure compliance with E1 Class (Low formaldehyde). In the beginning of 2008, a new heat recovery system was installed, replacing the old steam boiler to produce all required energy. This new system runs on Biomass and has ZERO carbon Emission.

**Valbopan, SA holds a certification of Chain of Responsibility (CoR), in accordance with the relevant standards, PEFC and FSC.**

**Valchromat® is :—**

- **Recyclable**
- **Manufactured without waste**
- **Non-Toxic**
- **Self sufficiency on thermal energy**

Forest Management Certifications



Certificate of Non Toxic Product



Certificate of Factory Production Control



Certificate of ISO 9001:2008



CE Certificate of Conformity



CE Certificate of Fire Retardant Product



Certificate of High Product Quality Award



Certificate of Safety of Toys EN 71



## valchromat® FACTS

### Material safety data sheet for Valchromat®

**STORAGE AND TRANSPORTATION** Storage and transportation should be carried out in accordance with the EPF recommendations for MDF, no special precautions need to be taken. For transportation, Valchromat® is classified as a non hazardous product, hence no labeling required.

### Handling and machining Valchromat®

The usual safety requirements for fabrication and machining should be observed with regard to dust extraction, dust collection and fire precautions. Because of the possibility of sharp edges, protective gloves should be worn when handling panels. Although the contact with dust from Valchromat® does not present any special problem, a small percentage of personnel might be sensitive or even allergic to machining dust in general.

### Environmental and health aspects in use

Valchromat® is chemically inert. Gas release from surfaces and edges is so low that they are not detectable by instrumental analysis. Formaldehyde emission is below the limit for wood-based materials. There is no migration affecting the foodstuffs and consequently, Valchromat® is approved for contact with foodstuffs. The surfaces are resistant to all common household solvents and chemicals and therefore, have been used in many applications where cleanliness and hygiene are important.

### Maintenance

Please note that we don't advice Valchromat® application without finishing in all situations. Valchromat® must always have a finishing to ensure the best appearance of the product.

### Valchromat in fire situations

The panels are difficult to ignite and have properties that retard "spread of flame", thus prolonging evacuation time. Due to incomplete burning, as with any organic material, hazardous substances are to be found in the smoke. However Valchromat® is classified Euroclass D (smoke class s1, drop class d0) according to EPF regulations. In dealing with fires in which Valchromat® is involved the same fire fighting techniques should be employed as with other wood-based building materials.

### Waste disposal

Valchromat can be brought to controlled waste disposal sites according to current national and/or regional regulations. However, there are two other alternatives: recycling (Valbopan has the licence for this process) and energy recovery in approved industrial incinerators.



# valchromat®

## FACTS

### Technical Data

#### PHYSICAL-CHEMICAL CHARACTERISTICS

Physical state	Solid sheet
Density	0,76 g/cm <sup>3</sup> (varies considerably in different thicknesses)
Solubility	Insoluble in water, oil, methanol, diethyl ether, n-octanol, acetone
Boiling point	None
Evaporation rate	None
Melting point	Doesn't melt
Heavy metals	Valchromat® doesn't contain toxic compounds of antimony, barium, cadmium, chromium III, chromium VI, lead, mercury, selenium

#### STABILITY AND REACTIVITY DATA

Stability	Very stable
Hazardous reactions	Neither reactive nor corrosive
Material incompatibility	Strong acids or alkaline solutions will stain the surface
Thermal decomposition	Possible above 220°C. Depending upon the burning conditions (temperature, amount of oxygen, etc.) toxic gases may be emitted, e.g. carbon monoxide, carbon dioxide, ammonia
Flammability	Valchromat® isn't considered to be flammable. They will burn only in fire situation, in presence of open flames
Extinguishing media	Valchromat® is considered as a class A material. Carbon dioxide, water spray, dry chemical foam can be used to extinguish flames. Water dampens and prevents rekindling. Wear self breathing apparatus and protective clothing. Protection against fire
Machining	Use gloves to protect from sharp edges and safety-glasses to prevent eye injury. No special working equipment is necessary, except protections to minimize dust exposure in case of sheet machining
Disposal considerations	Waste material shall be handled according to local regulations. Burning is approved in industrial incinerators. Valbopan has the license for recycling Valchromat®
Health information	Valchromat® is not dangerous for humans and animals. There is no evidence of Valchromat® toxicological effects and ecotoxicity. Valchromat® surfaces are physiologically safe
Working areas	General dust regulations apply. Although Valchromat® dust is thinner than usual
Formaldehyde emission	<8mg when tested according to EN120 (perforator method)
Additional remarks	Valchromat® are solid sheets and there are health hazards associated with them

# valchromat®

## FACTS

### Formula for bowing of Valchromat Shelves supporting Weight

There is a formula, based on several factors, that gives one an idea of the "worst case scenario". If the distance between supports is 1000mm then, the worst situation would be to have a bow of 1mm, which might be too much! With a support every 500mm, there should be no bending to bear this load. If you maintain this distance between supports, it will support approximately 4 kg without bending.

Total Weight	Distance Support	Mod Elasticity	Width	Thickness	Acceleration	Bending	Bending
Kg	mm	N/mm <sup>2</sup>	mm	mm	m/s <sup>2</sup>	mm	cm
W	L	E	b	t	a	d	d
20	1000	3000	300	8	9.81	73.9	7.4
20	1000	2800	300	12	9.81	23.7	2.4
20	1000	2700	300	16	9.81	10.0	1.0
20	1000	2700	300	19	9.81	6.0	0.6
20	1000	2600	300	22	9.81	3.8	0.4
20	1000	2600	300	25	9.81	2.8	0.3
20	1000	2600	300	30	9.81	1.6	0.2

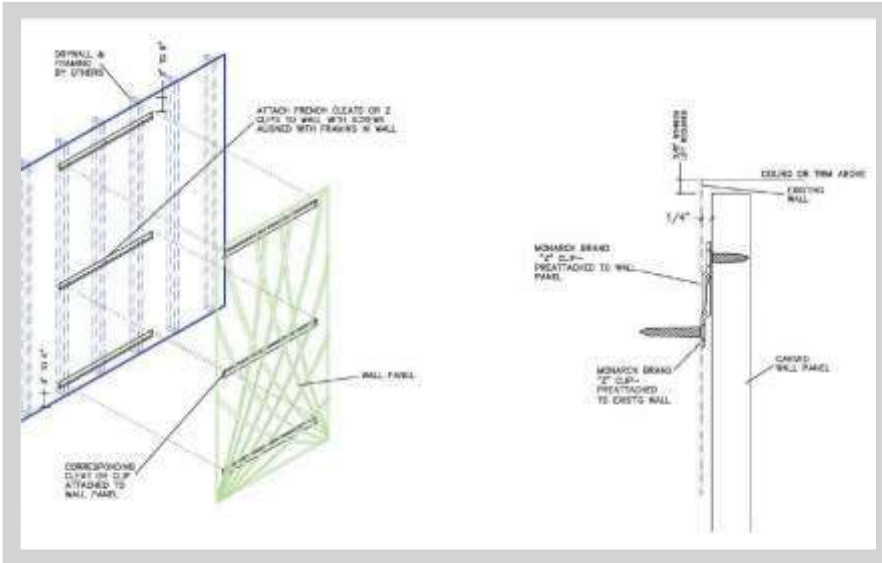
$$\text{Difference between straight and bent} = \text{bending} = \frac{5 \times W \times L^3}{32 \times E \times b \times t^3}$$

All the information provided here is based on the current state of technical knowledge, but does not constitute any form of guarantee. It is the personal responsibility of users of the product described in this information leaflet to comply with the appropriate laws and regulations.

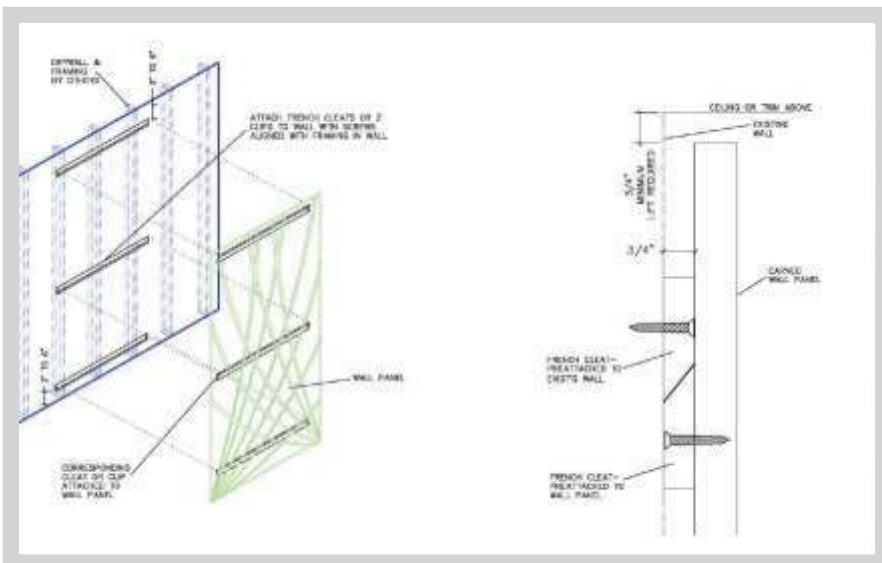


# valchromat® INSTALLATION

## METHOD 1 : Monarch brand "Z" CLIP

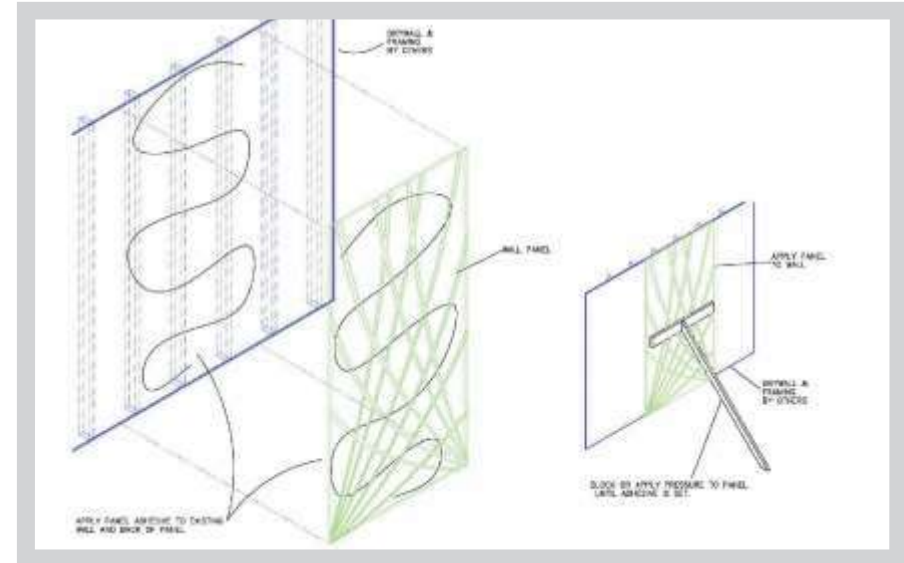


## METHOD 2 : French CLEAT

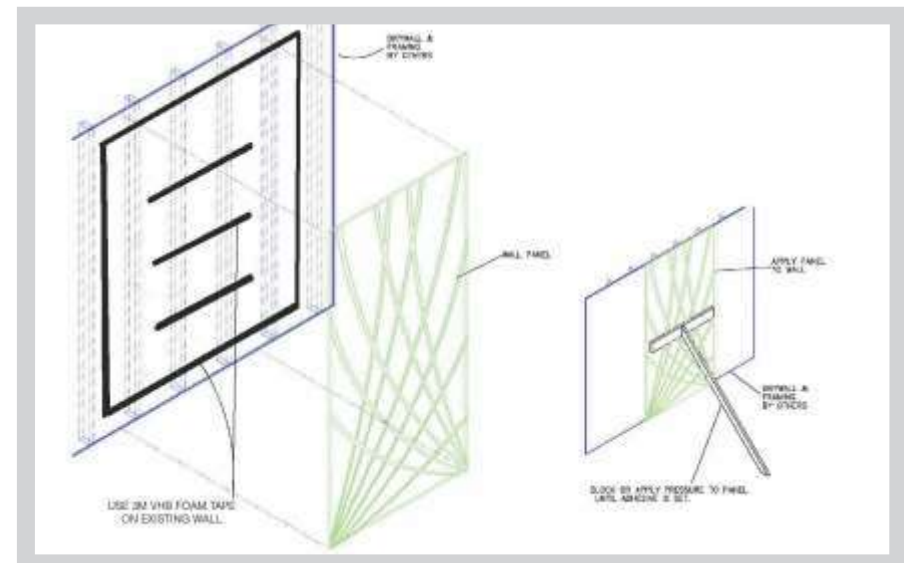


# valchromat® INSTALLATION

## METHOD 3 : Apply Panel Adhesive to existing Wall and back of Panel



## METHOD 4 : Use 3M VHB Foam Tape to existing Wall and back of Panel







# VENTURA

Premium Architectural Surfaces

Since 1994

1/120, W.H.S, Kirti Nagar, New Delhi 110 015  
+91-11-4554 6700 (100 Lines), [mktg@venturaindia.com](mailto:mktg@venturaindia.com)

[f /venturaintnl](#) [t /venturaint](#) [v /user/venturaindia](#) [in /venturaint](#)