

**VENTURA**<sup>®</sup>  
ARCHITECTURAL LAMINATES

I N S P I R E D   A E S T H E T I C S

  
**UNICORN**  
MCS COLLECTION

# VENTURA

Since 1994

Ventura International Pvt. Ltd. was conceived in 1994 and is today one of the leading importer of an exclusive range of premium interior and exterior decorative architectural products. It's position and strength in this field is very well established in the country.

Ventura's mission is to satisfy maximum creative needs of the Interior Designers, Architects and Furniture manufacturers in India. It believes in offering the best possible products sourced across the globe which matches the taste and need of every individual.

Ventura is an exclusive country partner of leading international manufacturers of luxury architectural products such as Metallic Laminates, Architectural Laminates, Decorative Planks, WPC Exterior Cladding, Veneers, Exterior Facade Panels, Organically Coloured Wood Fibre Boards, 3d Wall Panels, Acrylic Glass Panels, Faux Leather Elements & Panels, Innovative Fixing Systems, Adhesives and many more path breaking products from Germany, Italy, Spain, USA, Portugal and Turkey.

These architectural surfaces are suitable for a host of application areas including showroom display, furnitures, residential & office high-end interiors, multiplexes, outdoor and indoor facades etc.

Ventura assures it's customers of providing them with the best quality, service, trust and client relationship.

# VENTURA®

ARCHITECTURAL LAMINATES



In European art and literature, for the last thousand years or so, UNICORN has been depicted as a white horse like animal with a long straight horn projecting from its forehead.

UNICORN is the most common image on the stone stamp seals of the Bronze Age Indus Valley Civilization. The UNICORN continues to hold a place in popular culture as a symbol of purity, grace, fantasy and rarity.

  
**UNICORN**  
MCS COLLECTION

UNICORN, Ventura's new range of MCS LAMINATES (Mineral Composite Surface) is another feather in its Architectural Laminates range, holds this concept of fantasy and rarity. A fine combination of Textures and Patterns.

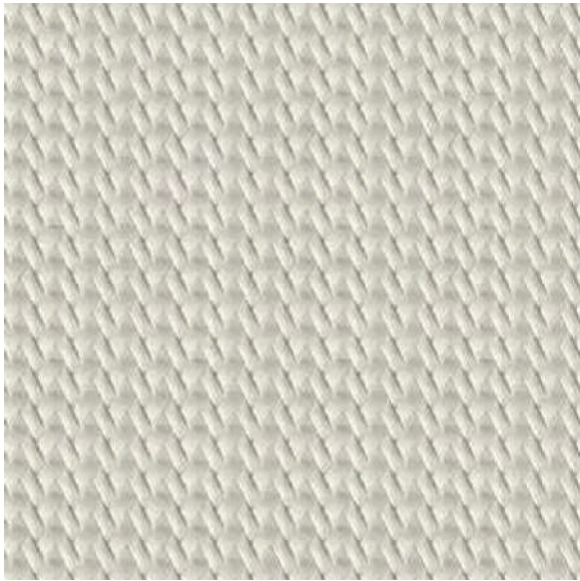
These laminates come in various Hues and Shades with matching edge bandings.



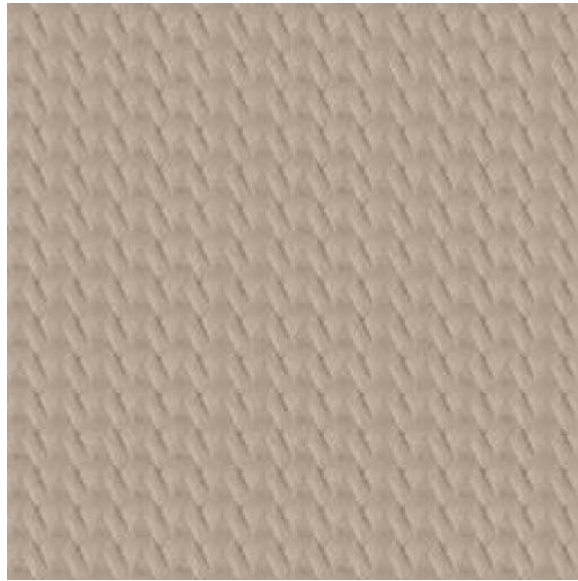
# Textures & Patterns

Woven patterns of cane mat, basket,  
dotted colourful skin of a Chameleon  
or leather texture of a Rhino





VU 01



VU 02



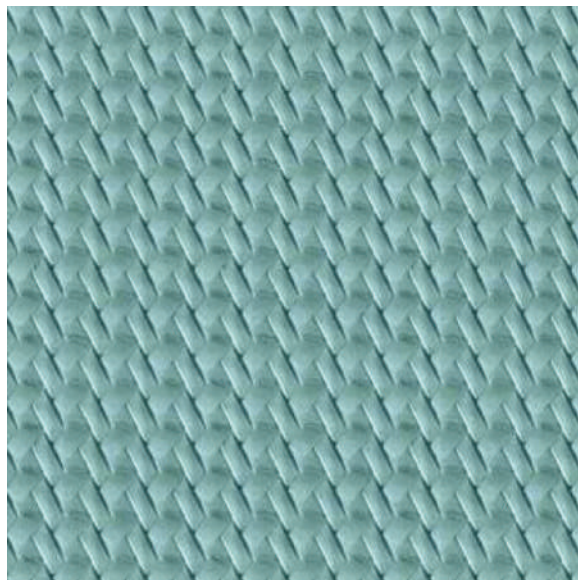
VU 03



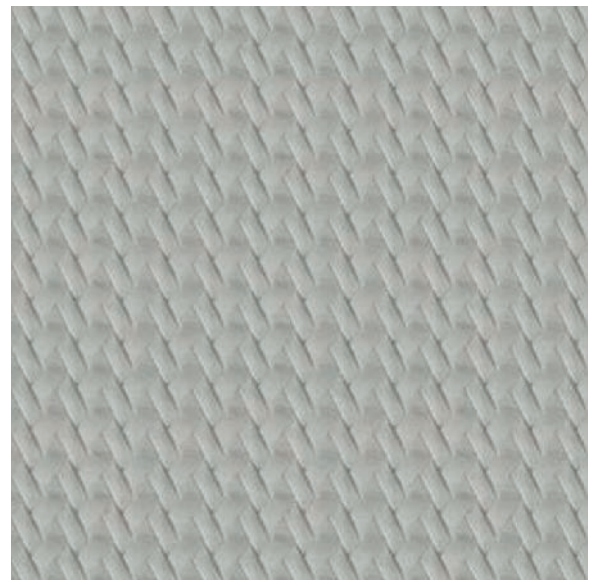
VU 04



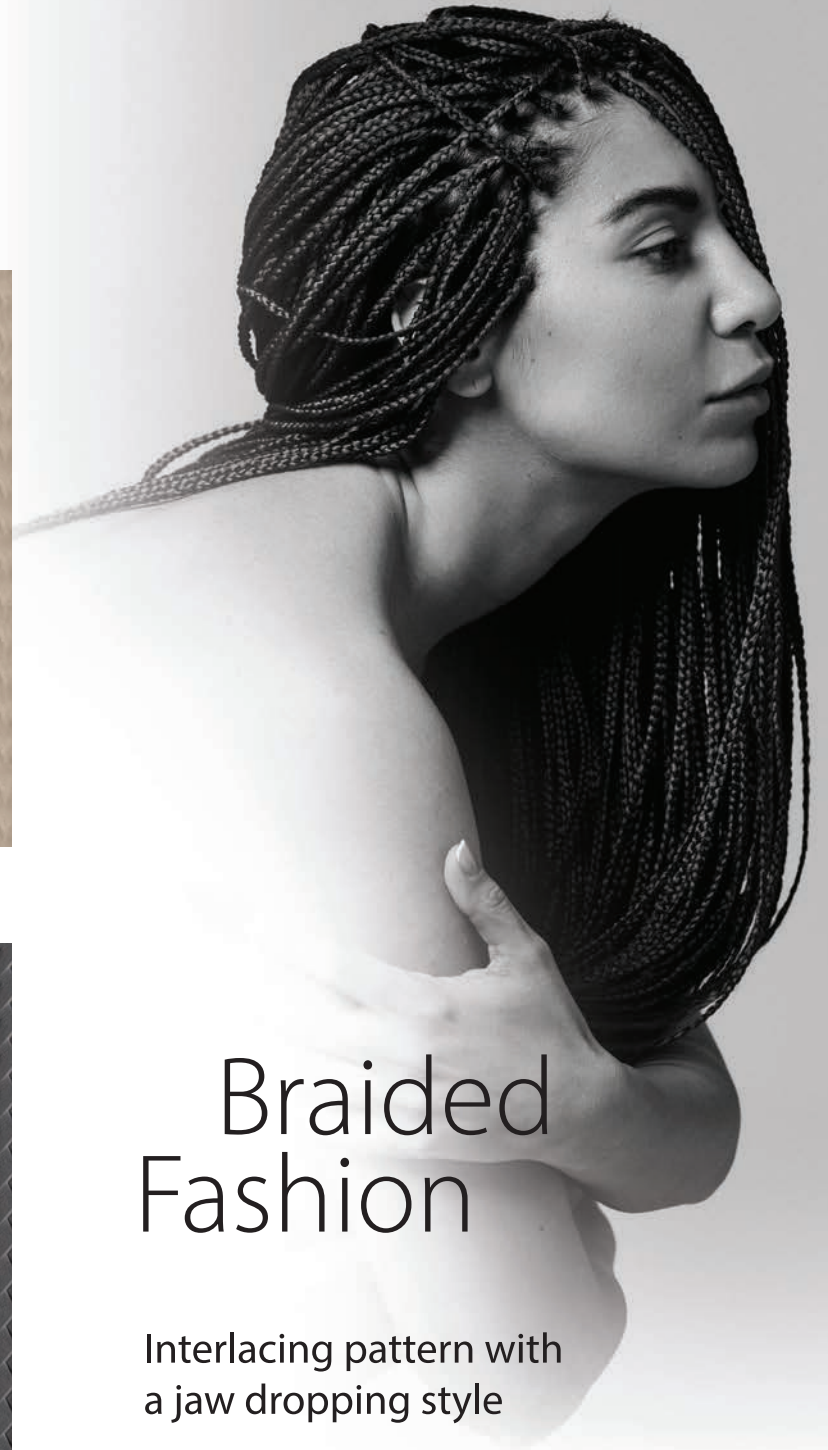
VU 05



VU 06



VU 07



# Braided Fashion

Interlacing pattern with  
a jaw dropping style

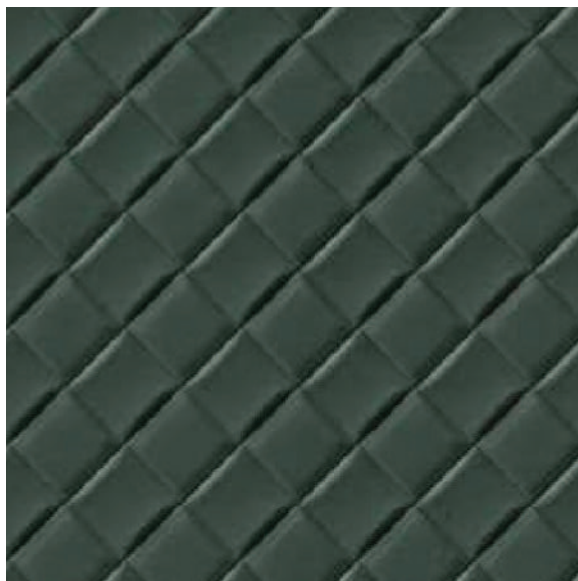


# Interwoven Ideas

Style statement and  
design element.



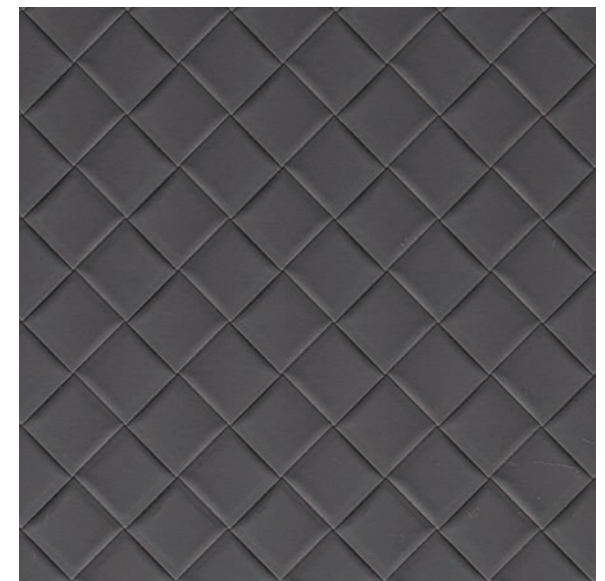
VU 11



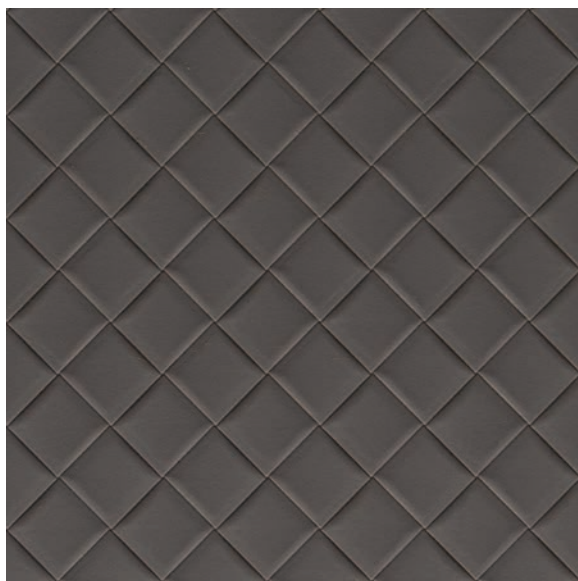
VU 12



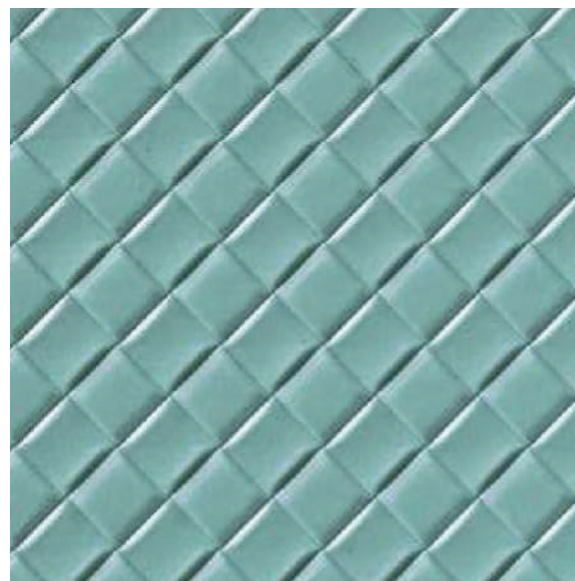
VU 13



VU 14



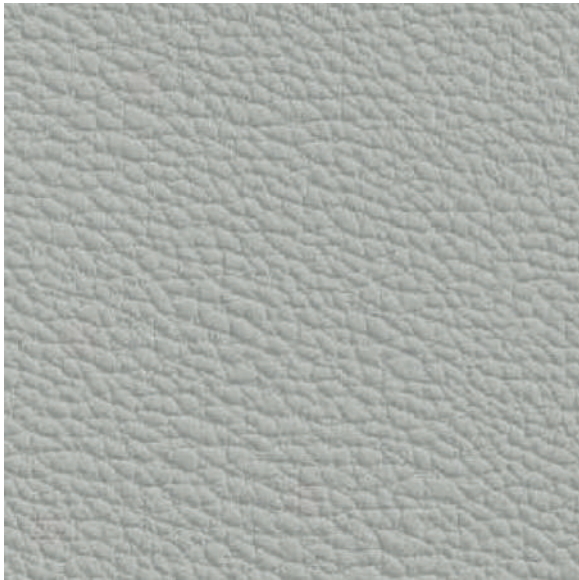
VU 15



VU 16



VU 17



VU 21



VU 22



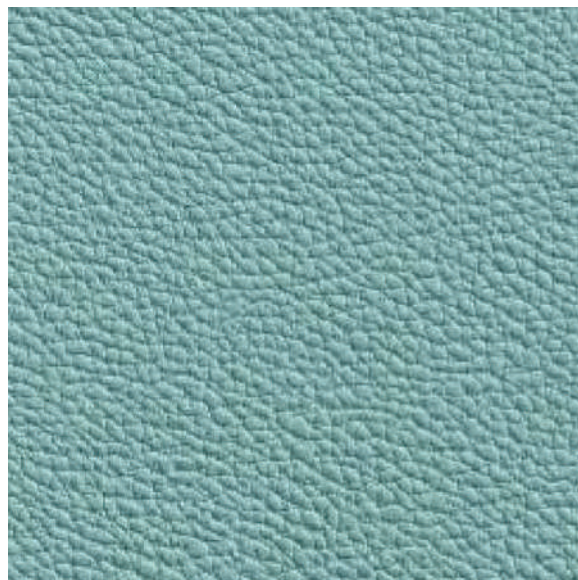
VU 23



VU 24



VU 25



VU 26



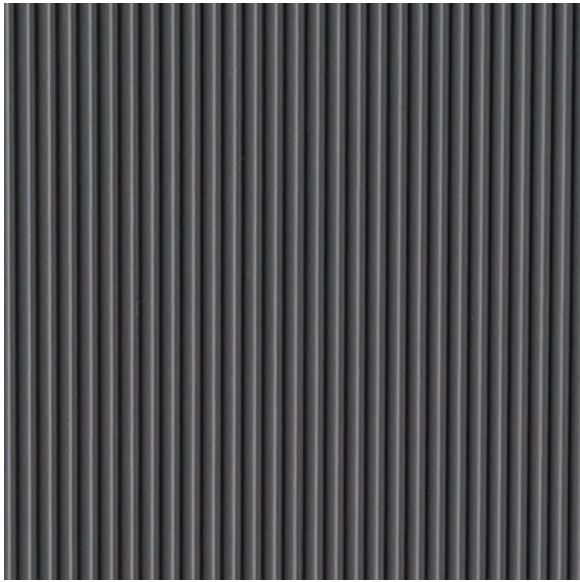
# Tough Elegance

The Best of Both Worlds

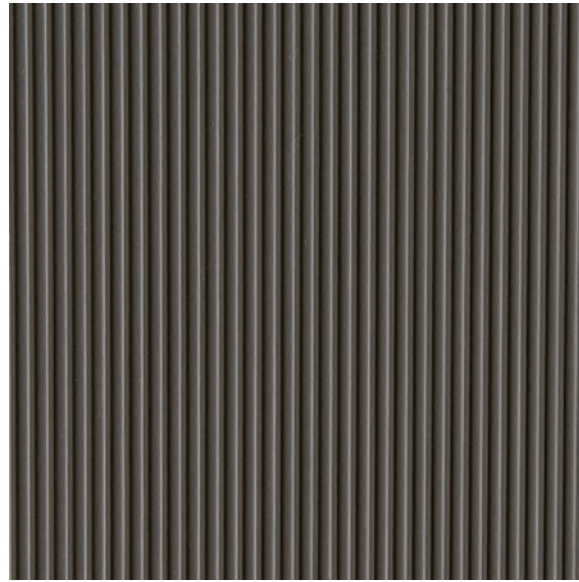


VU 27

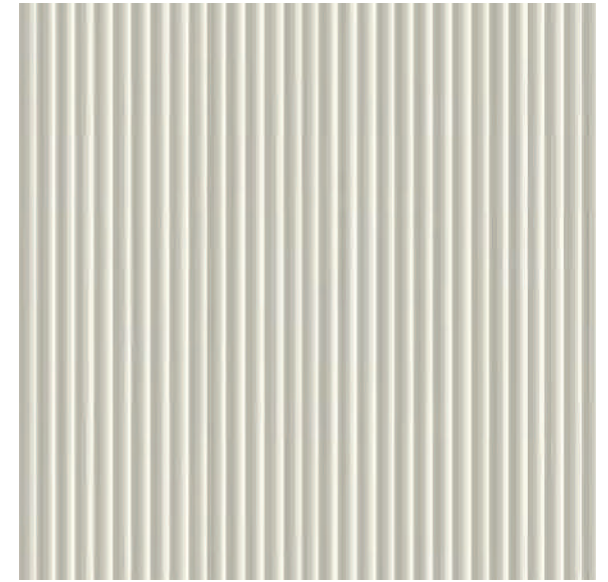




VU 31



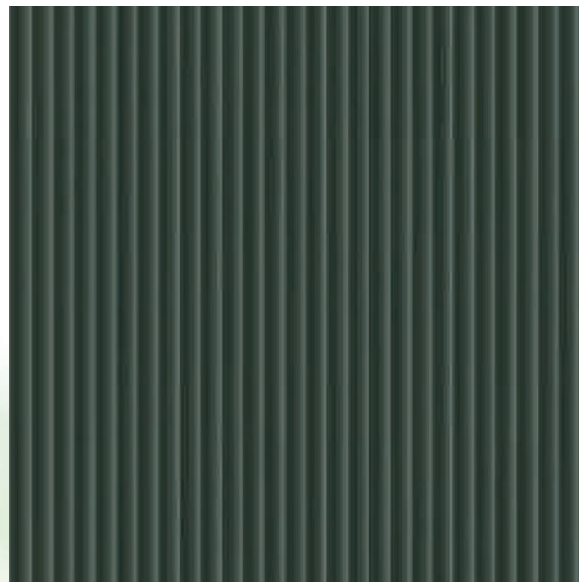
VU 32



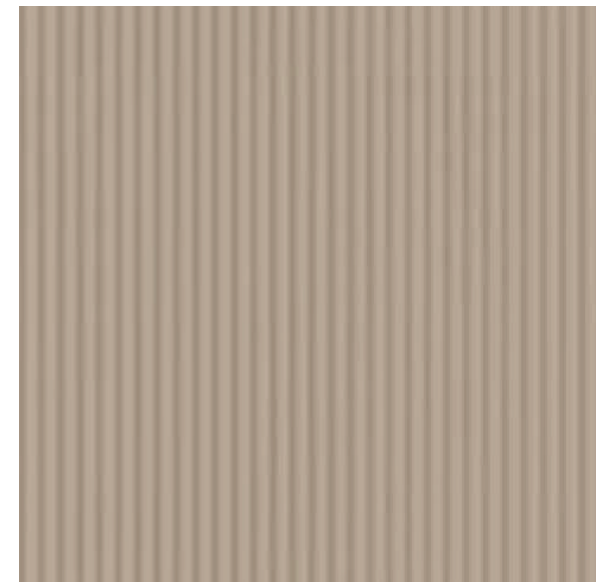
VU 33

# Linear Looks

Even a linear texture on a mushroom can fascinate



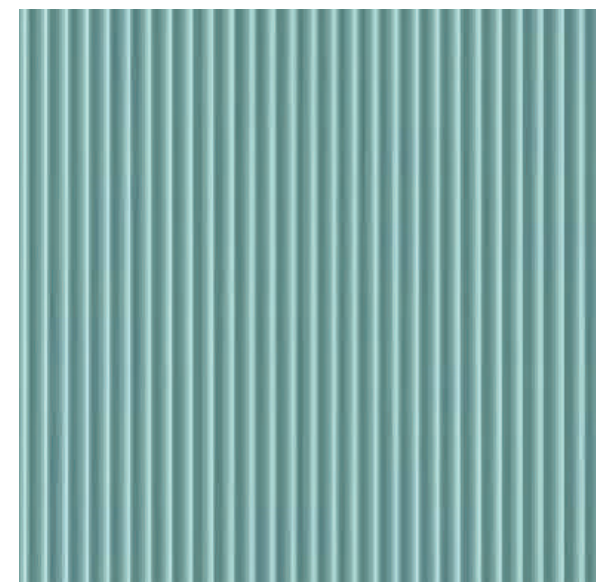
VU 34



VU 35



VU 36



VU 37



# Fabulous Fabrics

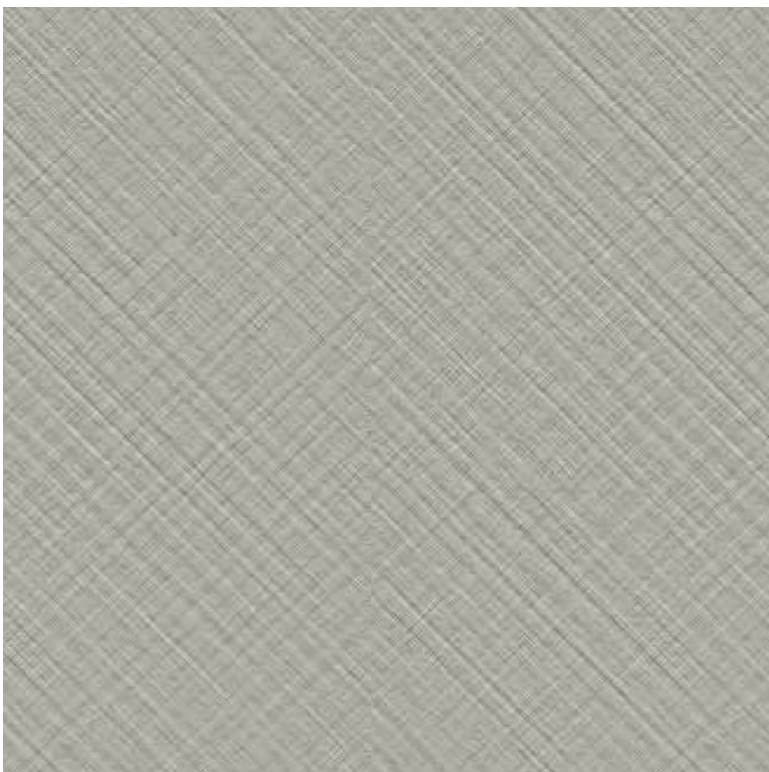
An embossed manifestation.



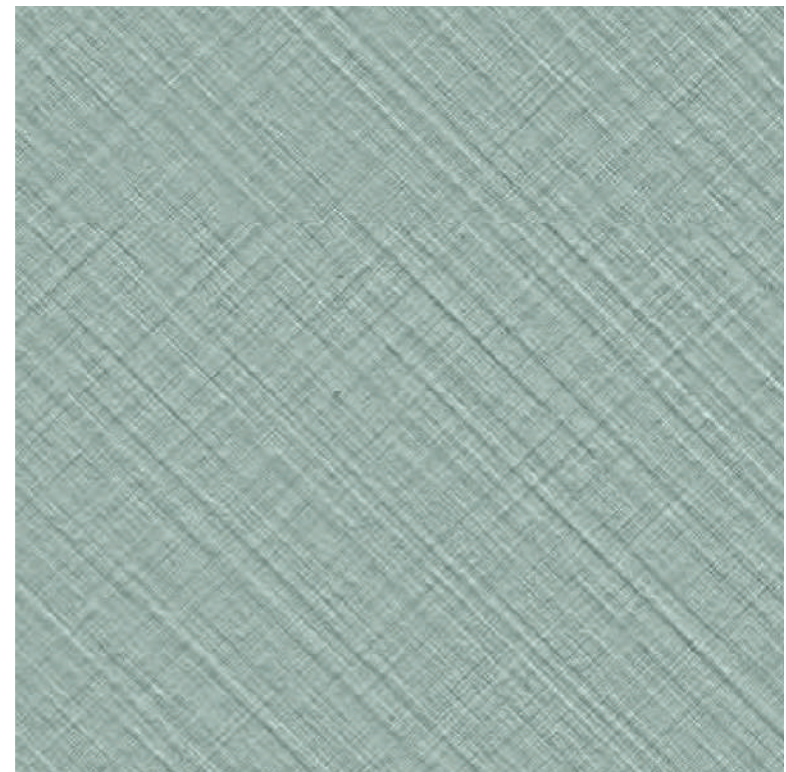
VU 41



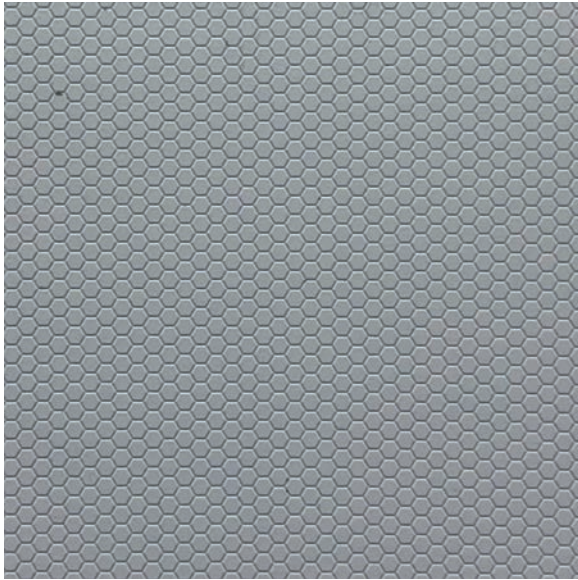
VU 42



VU 43



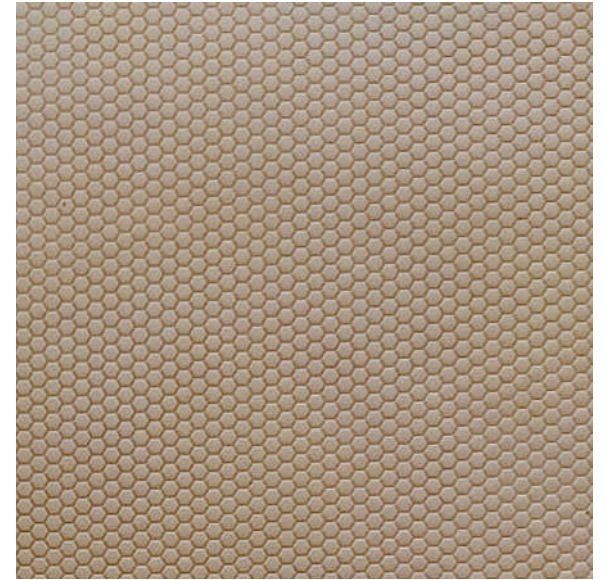
VU 44



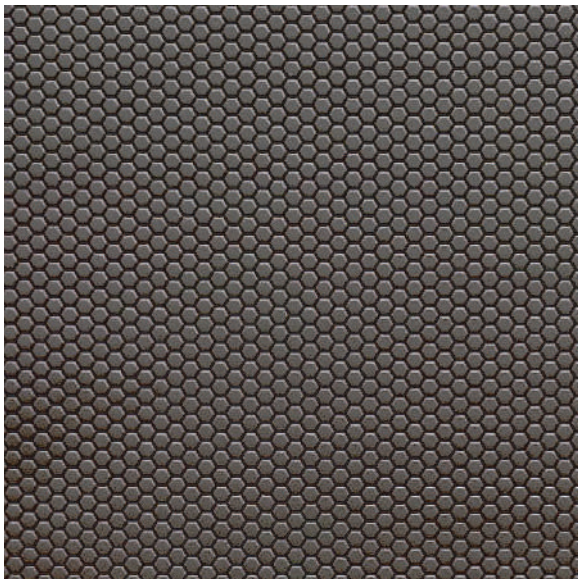
VU 51



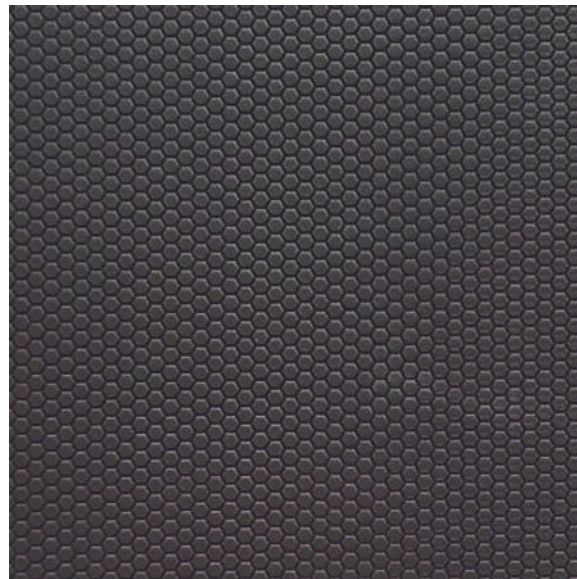
VU 52



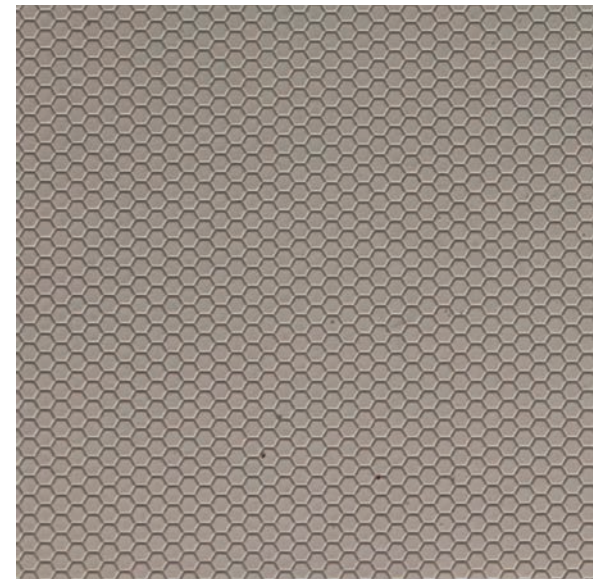
VU 53



VU 54



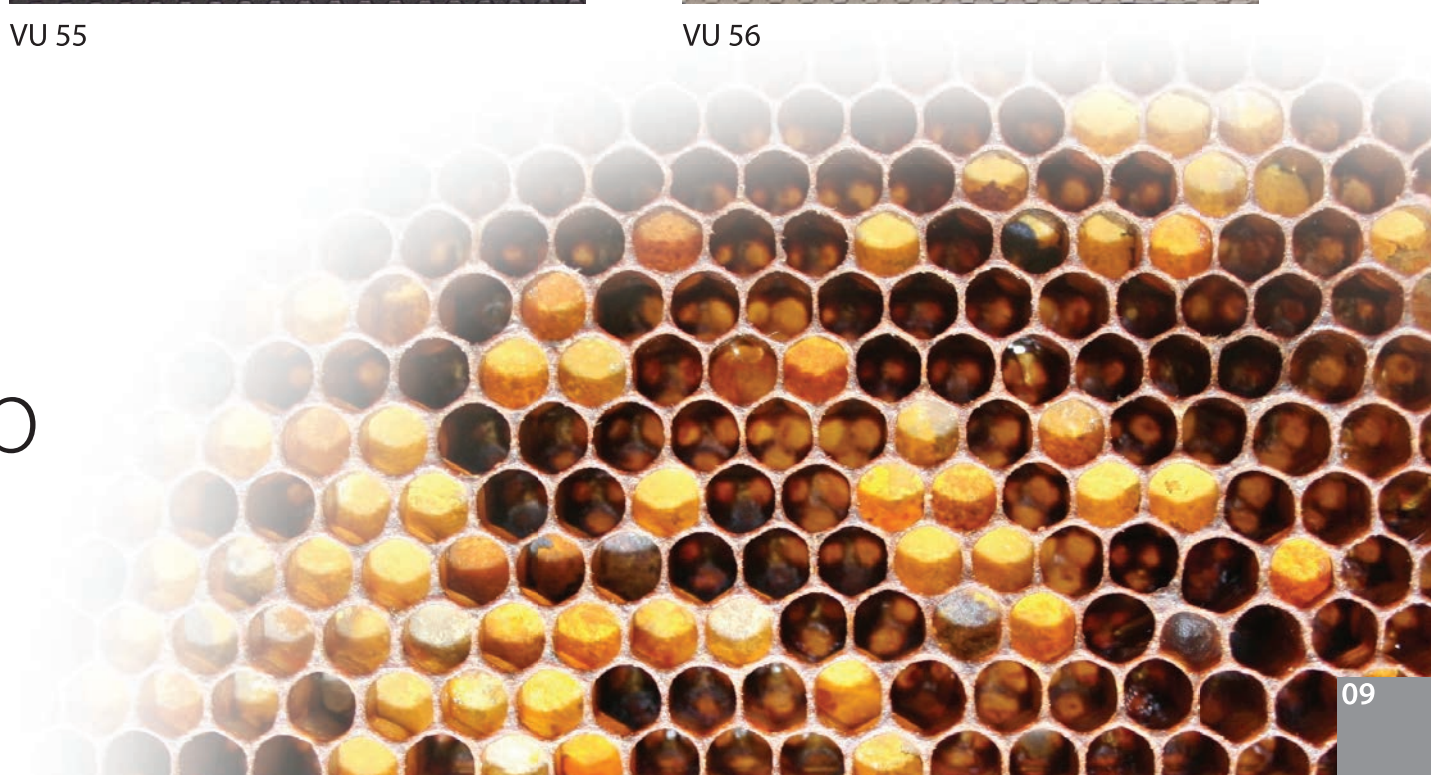
VU 55



VU 56

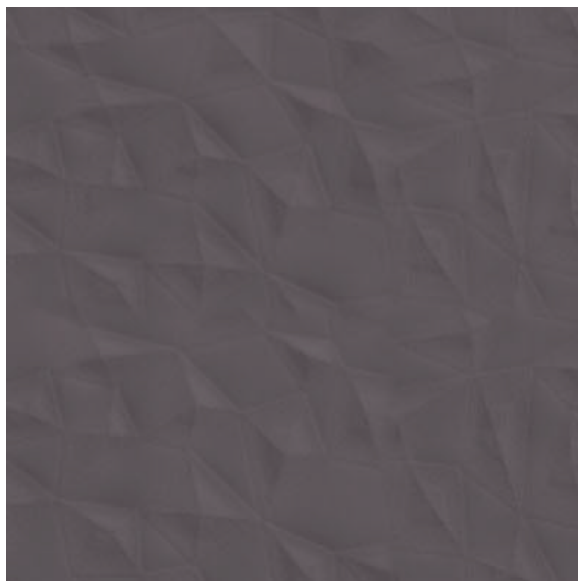
# Heavenly Honeycomb

Hexagons for a reason.





VU 62



VU 63



VU 71

## Diamond Delights

Most precious and  
pristine creations



VU 72



VU 73

## Worldwide Web

Will cast their net on you





VU 81

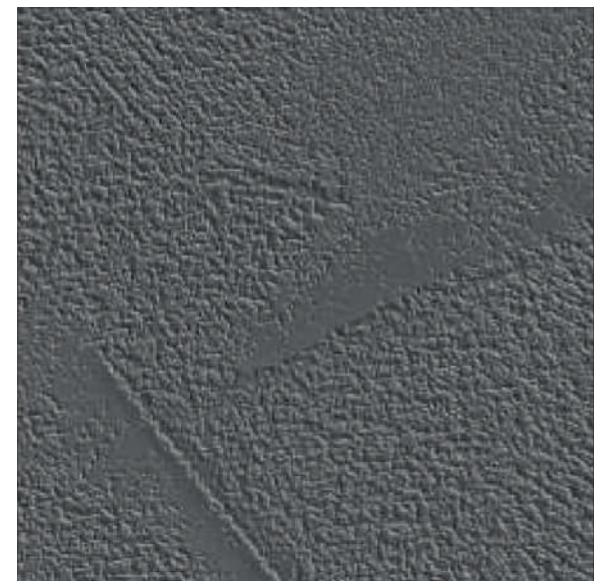


VU 82



VU 83

# Concrete Revolution



VU 86

A textured  
concrete look  
can transform  
any space.



VU 87



VU 88



VU 91



VU 92



VU 93



VU 94



VU 95

# Imperfect Perfections

Ideal for spaces  
where old meets new.



# Precious & Distinguished

Designs studded with  
Luxury and Striking Patterns

**UNICORN**  
MCS COLLECTION



VU 221



VU 222



VU 223



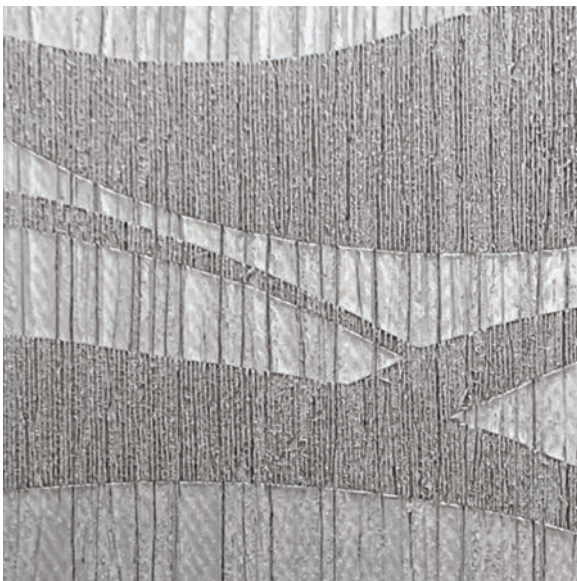
VU 231



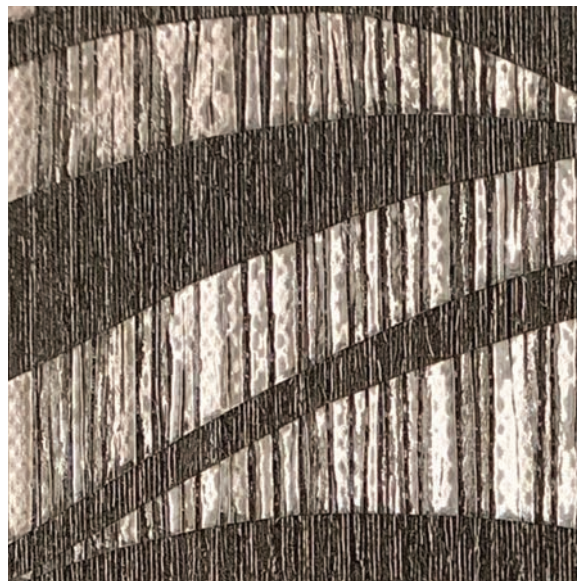
VU 232



VU 233



VU 241



VU 242



VU 251

# Feel The Class & The Coarse

A fabric textured look  
which is a compliment  
to any space



VU 261



VU 262



VU 263



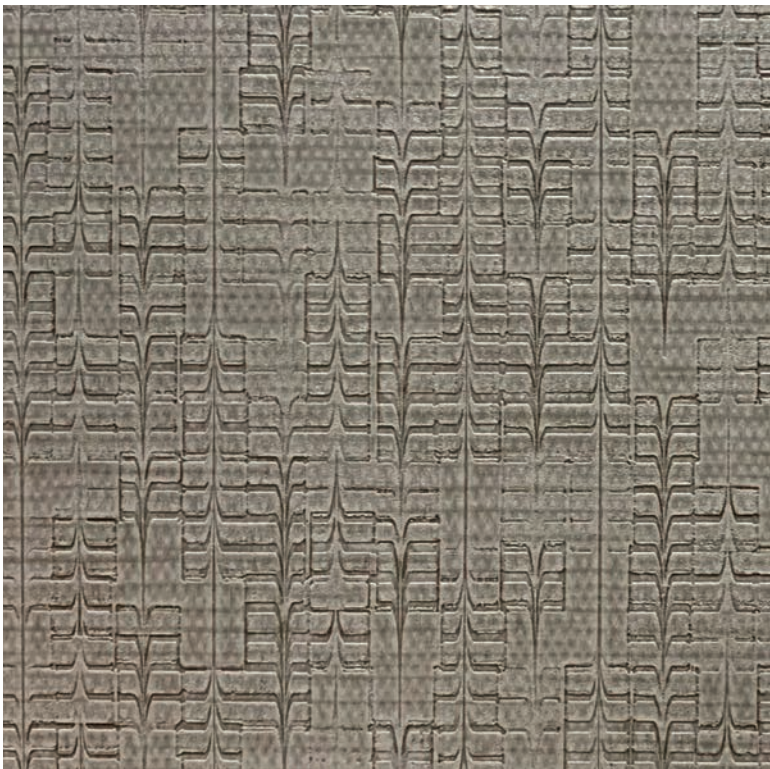
VU 264





# Minimalist Aesthetic

Referred to home design, personal style.



VU 281



VU 282

# Technical Specifications

## LAMINATE DIMENSION

Sheet size : 10' x 4' approx  
Sheet thickness : 1.5mm

## APPLICATION AREAS

Wall panelling, Wardrobes, Kitchen cabinets  
Table tops and all types of vertical and horizontal uses.

## EDGE BANDING

Width : 25mm

Matching Edge Bandings  
available for all colours.

# Recommended Adhesive



**VENTURABOND**

VENTURA®  
ARCHITECTURAL LAMINATES

OUR FINE RANGE OF LAMINATES

AMBER  
COLLECTION

BETON  
COLLECTION

FABLAM  
COLLECTION

UNICORN  
MCS COLLECTION

FLUTES  
COLLECTION

MARMO  
collection

**VENTURA** Since 1994 *beautifying lives*

**Ventura International Pvt. Ltd.**



- [@/Venturaintl](#)
- [in/Venturaint](#)
- [f/venturaintnl](#)
- [/user/venturaindia](#)

