

VENTURA[®]



ARCHITECTURAL LAMINATES

FABIAM
COLLECTION

0.8MM
LAMINATES

VENTURA

Since 1994

Ventura International Pvt. Ltd. was conceived in 1994 and is today one of the leading importer of an exclusive range of premium interior and exterior decorative architectural products. It's position and strength in this field is very well established in the country.

Ventura is an exclusive country partner of leading international manufacturers of luxury architectural products such as Metallic Laminates, Architectural Laminates, Decorative Planks, WPC Exterior Cladding, Veneers, Exterior Facade Panels, Organically Coloured Wood Fibre Boards, 3d Wall Panels, Acrylic Glass Panels, Faux Leather Elements & Panels, Innovative Fixing Systems, Adhesives and many more path breaking products from Germany, Italy, Spain, USA, Portugal and Turkey.

Ventura assures it's customers of providing them with the best quality, service, trust and client relationship.





INDEX

Shade no.	Page no.	Size
VF 5002	12	8' x 4'
VF 5003	12	8' x 4'
VF 5015	12	8' x 4'
VF 5017	12	8' x 4'
VF 5025	13	8' x 4'
VF 5039	10	8' x 4'
VF 5041	11	8' x 4'
VF 5042	10	8' x 4'
VF 5043	11	8' x 4'
VF 5044	11	8' x 4'
VF 5046 (NEW)	07	8' x 4'
VF 5047 (NEW)	07	8' x 4'
VF 5048 (NEW)	08	8' x 4'
VF 5049 (NEW)	08	8' x 4'
VF 5050 (NEW)	08	8' x 4'
VF 5051 (NEW)	08	8' x 4'
VF 5052 (NEW)	09	8' x 4'
VF 5053 (NEW)	09	8' x 4'
VF 5054 (NEW)	09	8' x 4'
VF 5055 (NEW)	09	8' x 4'
VF 5056 (NEW)	10	8' x 4'
VF 5057 (NEW)	10	8' x 4'
VF 5058 (NEW)	11	8' x 4'
VF 5302	13	8' x 4'
VF 6002	14	8' x 4'
VF 6003	14	8' x 4'
VF 6005	16	8' x 4'
VF 6006	16	8' x 4'
VF 6008	16	8' x 4'
VF 6009 (NEW)	17	8' x 4'
VF 6010 (NEW)	17	8' x 4'
VF 6011 (NEW)	17	8' x 4'
VF 6016	14	8' x 4'
VF 6022	15	8' x 4'
VF 6023	15	8' x 4'
VF 6025	15	8' x 4'
VF 6051 (NEW)	03	8' x 4'
VF 6052 (NEW)	05	8' x 4'
VF 6053 (NEW)	03	8' x 4'
VF 6054 (NEW)	05	8' x 4'





VF 6051 (Premium) (NEW)



VF 6053 (Premium) (NEW)





VF 6052 (Premium) (NEW)



VF 6054 (Premium) (NEW)





EB 5046



VF 5046 (Premium) (NEW)



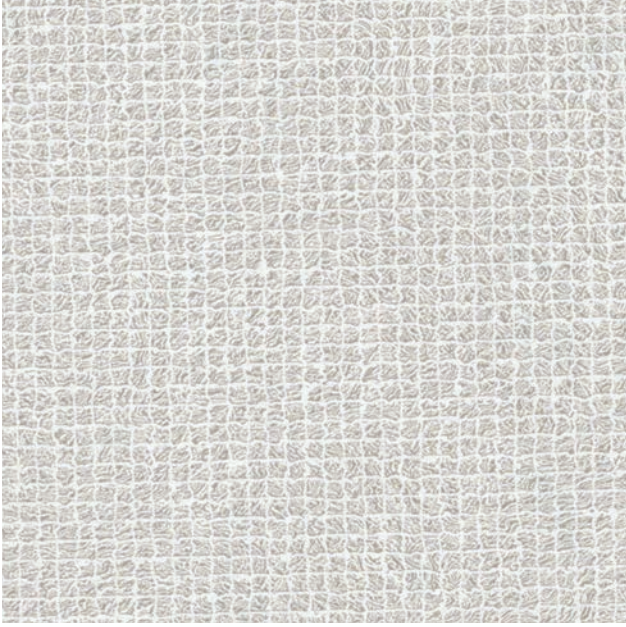
EB 5047



VF 5047 (Premium) (NEW)

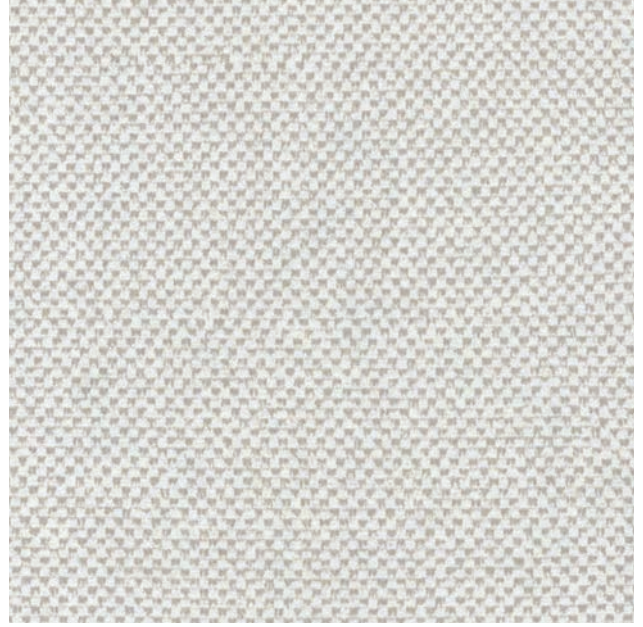


EB 5048



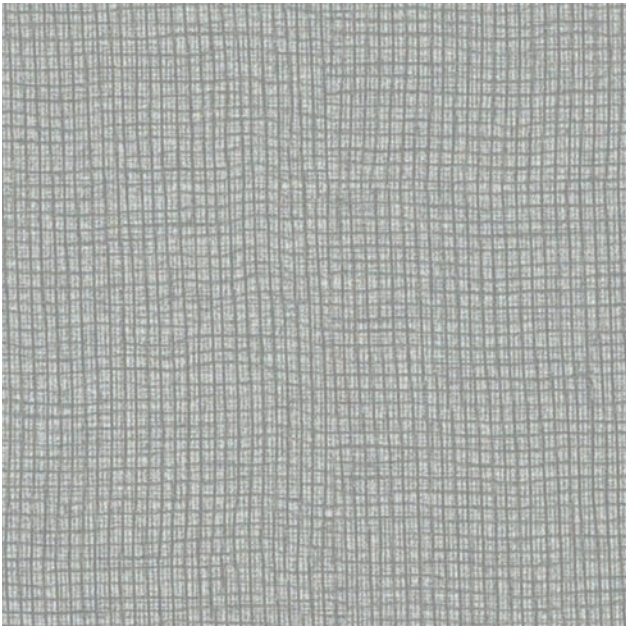
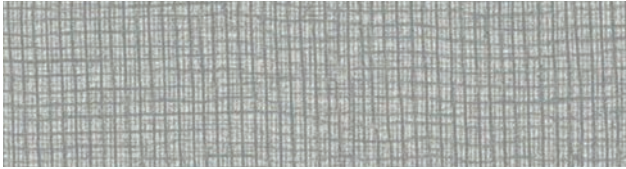
VF 5048 (NEW)

EB 5049



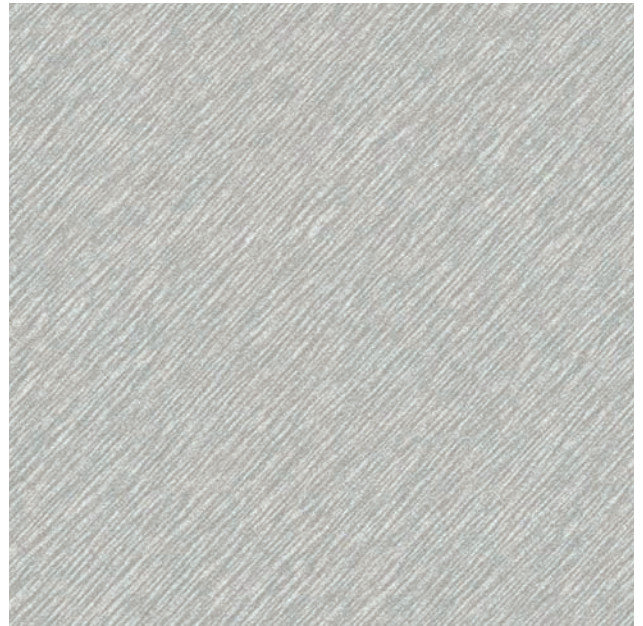
VF 5049 (NEW)

EB 5050



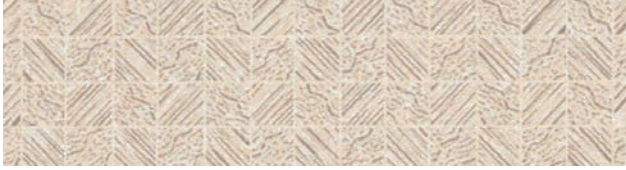
VF 5050 (NEW)

EB 5051



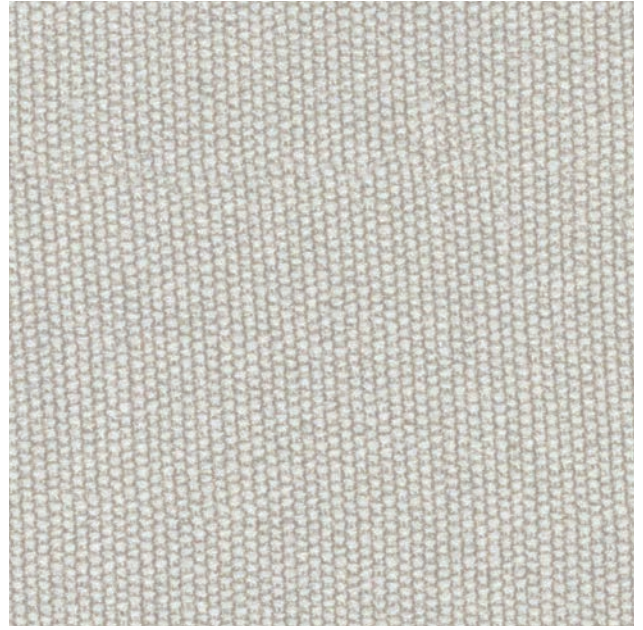
VF 5051 (NEW)

EB 5052



VF 5052 (NEW)

EB 5053



VF 5053 (NEW)

EB 5054



VF 5054 (NEW)

EB 5055



VF 5055 (NEW)

EB 5056



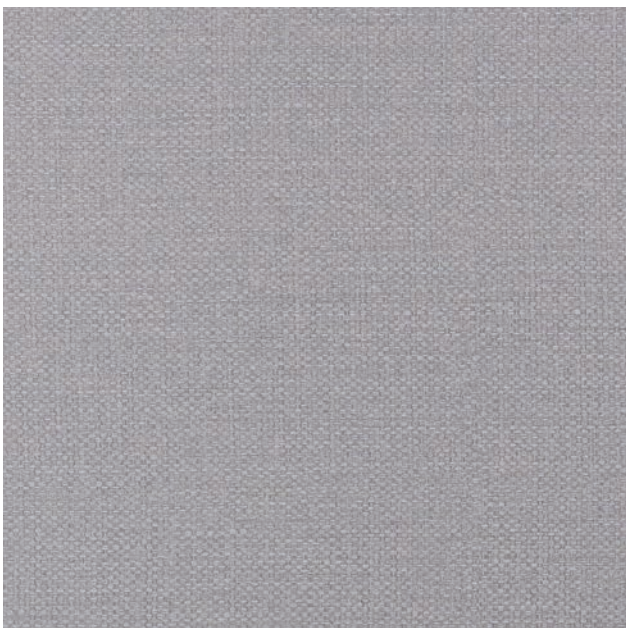
VF 5056 (NEW)

EB 5057



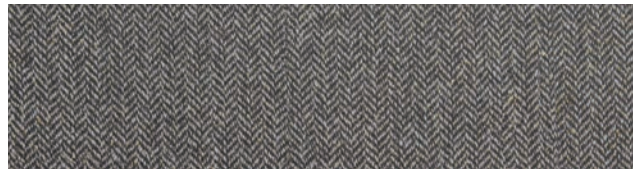
VF 5057 (NEW)

EB 5039



VF 5039

EB 5042



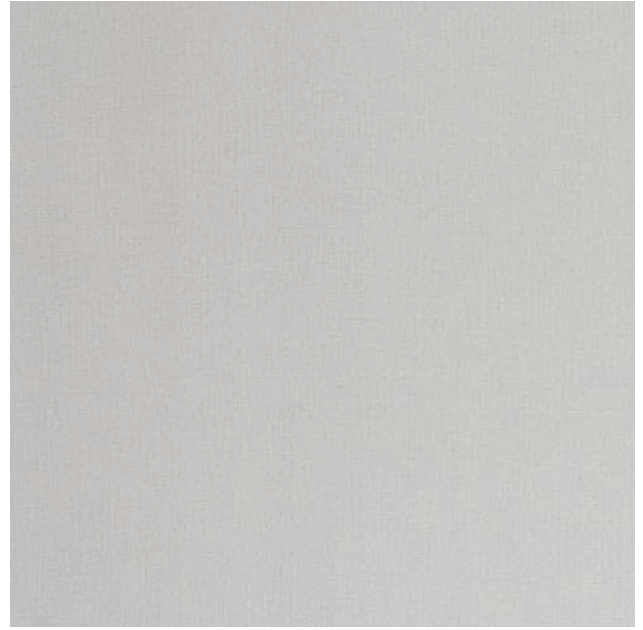
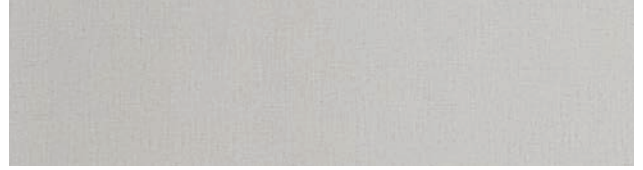
VF 5042

EB 5058



VF 5058 (NEW)

EB 5041



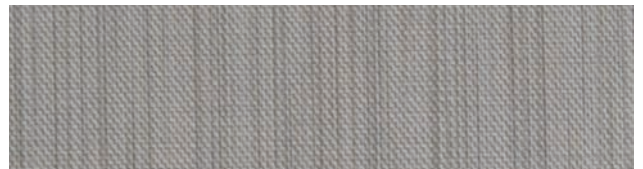
VF 5041

EB 5043



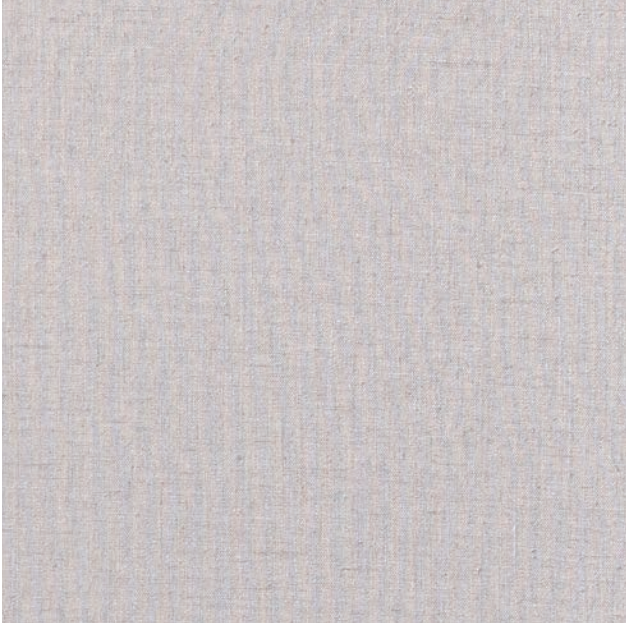
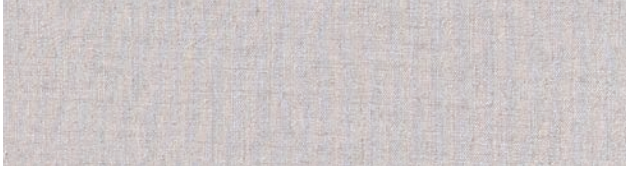
VF 5043 (NEW)

EB 5044



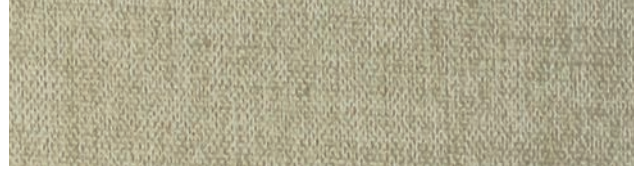
VF 5044

EB 5002



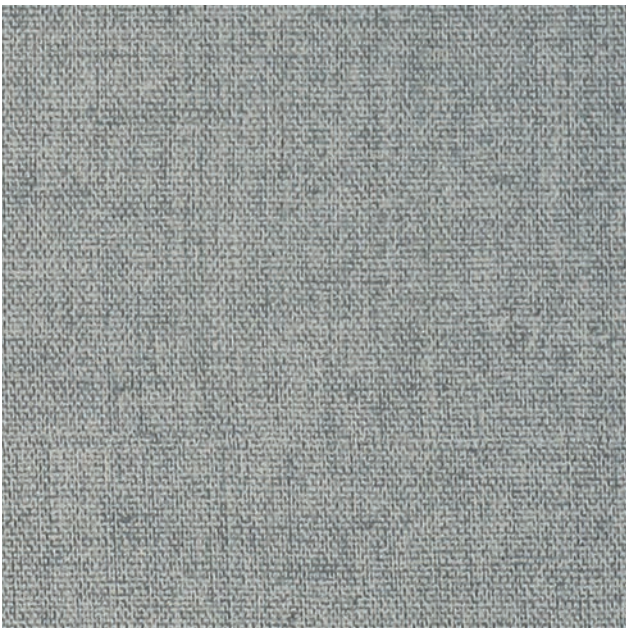
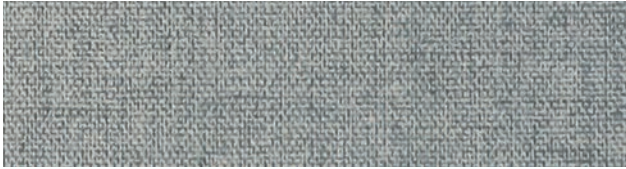
VF 5002

EB 5003



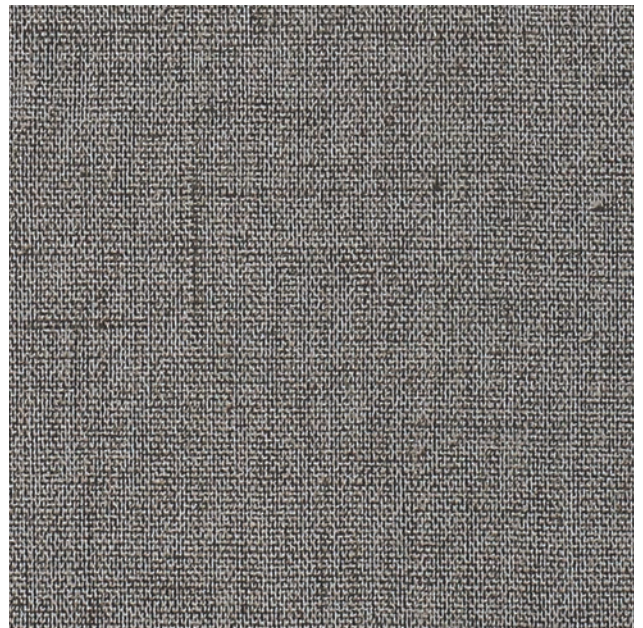
VF 5003

EB 5015



VF 5015

EB 5017



VF 5017

EB 5025



EB 5302



VF 5025



VF 5302

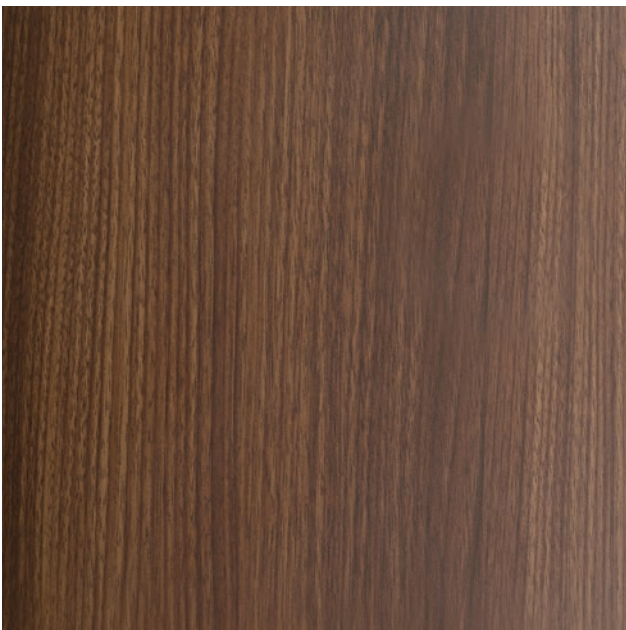
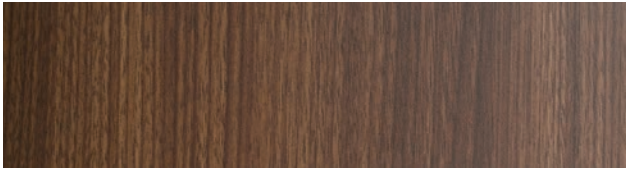


EB 6002



VF 6002

EB 6003



VF 6003



EB 6016

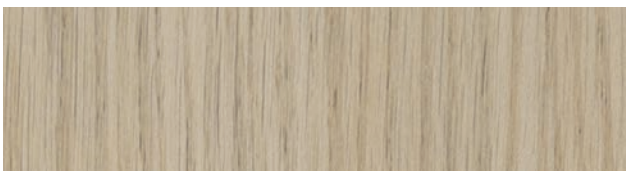


VF 6016





EB 6022



VF 6022



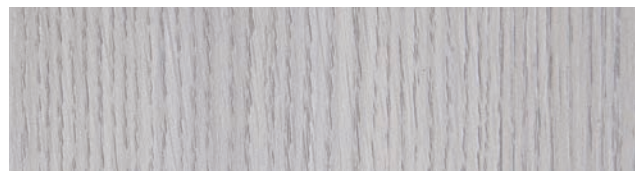
EB 6023



VF 6023



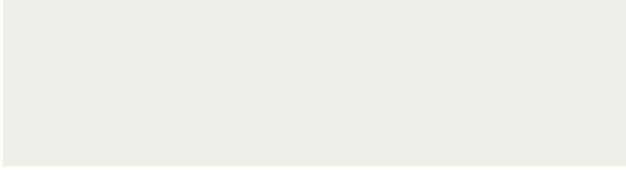
EB 6025



VF 6025

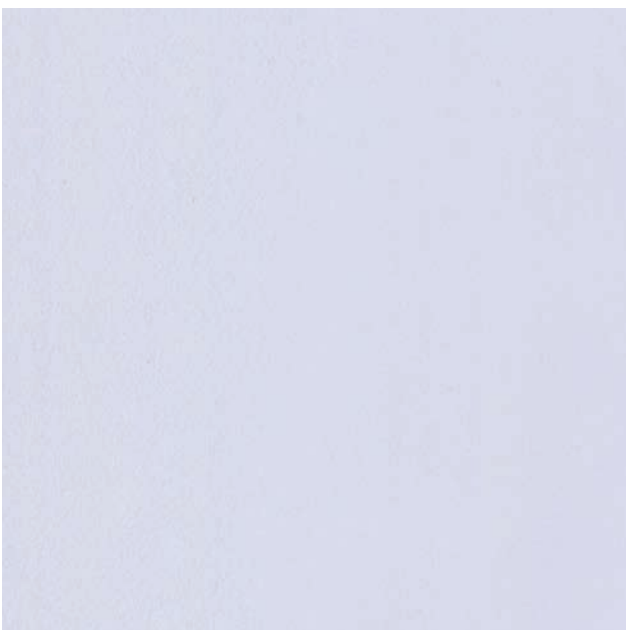
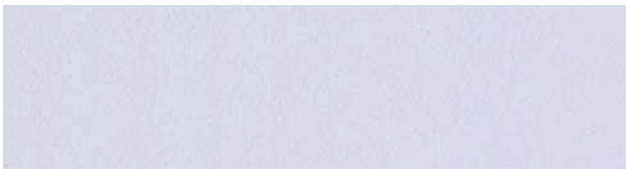


EB 6006 SF



VF 6006 SF

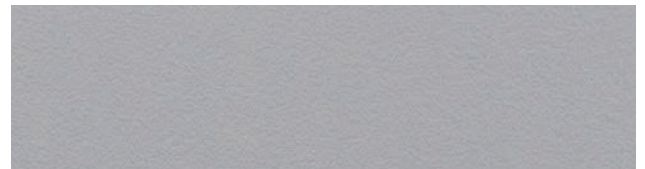
EB 6005 SF



VF 6005 SF



EB 6008 SF

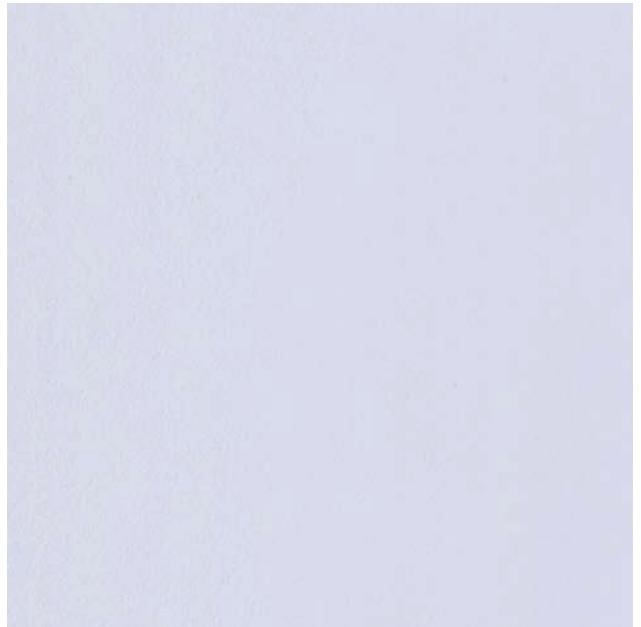


VF 6008 SF





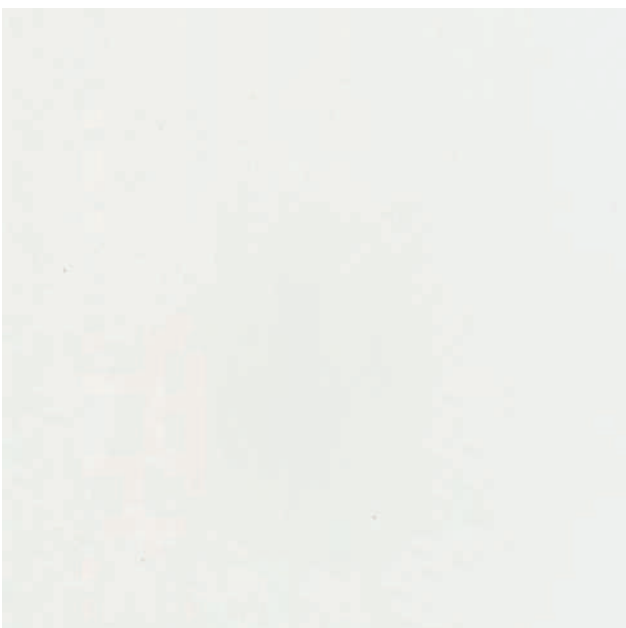
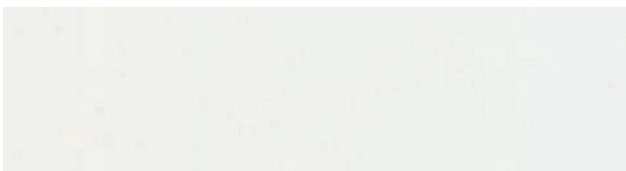
EB 6009 HG



VF 6009 HG (Premium) (NEW)



EB 6010 HG

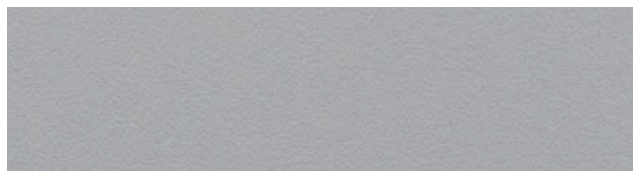


VF 6010 HG (Premium) (NEW)



Sheet Size : 8' x 4' ; Sheet Thickness : 0.8 mm

EB 6011 HG



VF 6011 HG (Premium) (NEW)



Edge Banding Size : 22 mm ; Thickness : 0.8mm

TECHNICAL INFORMATION

Product : HIGH PRESSURE LAMINATED SHEET
 Sheet Thickness : 0.8 mm
 Sheet Size : 2440 mm x 1220 mm (8' x 4')

MATCHING EDGE BANDINGS

Width : 22 mm
 Thickness : 0.8 mm
 Length : 50 mtr Roll

TECHNICAL SPECIFICATIONS

Properties	Specified Values as per IS: 2046-1995 Type S, HGS	Ventura Conforms
Thickness	0.8 mm (±10%)	Yes
Resistance to Surface Wear	350 (Revolutions) Minimum	Yes
Resistance to immersion in boiling water		Yes
-Mass increase (%)	10.0% (Maximum)	
-Thickness Increase (%)	12.0% (Maximum)	
-Appearance	Grade 4	
Resistance to Dry heat at 180°C	4 Minimum	Yes
Dimensional Stability at deviated temperature		Yes
-Longitudinal (%)	0.55% (Maximum)	
-Transverse (%)	1.05% (Maximum)	
Dimensional Stability at 20°C		Yes
-Longitudinal (%)	0.375% (Maximum)	
-Transverse (%)	0.60% (Maximum)	
Resistance to impact by small diameter ball	20 N (Minimum)	Yes
Resistance to cracking	Not worse than 4	Yes
Resistance to scratching	2 N (Minimum)	Yes
Resistance to Staining	Not worse than 5	Yes
Resistance to color change (Wool Standard)		Yes
-In Xenon arc light	Not worse than 6	
-In enclosed carbon arc light	Not worse than 5	
Resistance to cigarette burns	Grade 3 Minimum	Yes
Resistance to steam	Grade 4 Minimum	Yes
Appearance	Should be free from foreign particles/no ABC effect	Yes

Colour of sample and actual sheet may vary.
 Kindly check it before placing the order.

CARE AND MAINTENANCE



Storage : Sheets should be stored horizontally with the top sheet turned face down and a thick hard board placed on top to protect the material from possible damage and reduce the chances of getting warped. Laminate sheets should be protected from moisture and should never be stored where they may come in contact with the floor or outside wall.



Abrasives : Abrasive pads, scouring powders or cleansers may permanently damage the laminate surface making it susceptible to staining.



Harsh Chemicals : Harsh chemicals such as oven cleaner, toilet cleaner or drain cleaner will etch and discolor the decorative surface. High Pressure Decorative Laminates are not designed to resist continual contact with these chemicals. If any of these products spill over the surface remove immediately, rinse thoroughly and wipe dry.



Hot Objects : Even though HPL has high heat resistance, exposure to temperatures greater than 135°C is not recommended. Hence, do not place hot frying pans or dishes directly from the oven or cooktop on the laminate surface. As a precaution, protect the surface from heat generating appliances such as pressing irons, toasters, curling irons and electric cookers by using a trivet or insulated pad. Prolonged exposure to temperatures above 65°C may result in separation of the laminate from the substrate.



Sharp Objects : Never use knives or other sharp objects directly on the decorative surface. Use of chopping board or counter saver is recommended.



Impact : Even though High Pressure Decorative Laminates have excellent impact resistance, chipping or cracking may occur. Do not abuse the High Pressure Decorative Laminate by dropping heavy objects such as cans, dinnerware or glasses or deliberately hammering directly on the surface.

RECOMMENDED ADHESIVE



लैमिनेट शीट चिपकाते समय निम्न सावधानियाँ रखनी चाहिए

- लैमिनेट शीट लगाते समय यह जाँच लें कि सभी शीट्स का रंग एवं डिज़ाइन एक समान हैं।
- लैमिनेट शीट का बड़ा टुकड़ा (piece) लगाते समय अत्यधिक सावधानी बरतें।
- लैमिनेट शीट को 90° में काट कर चिपकाने से CRACK आने की संभावना रहती है।
- ADHESIVE उच्च क्वालिटी का ही काम में लें।
- अत्यधिक नमी के स्थान पर लैमिनेट शीट पर BUBBLES आने की संभावना रहती है।
- लैमिनेट शीट चिपकाते वक़्त कम दबाव के कारण भी शीट खुलने की संभावना रहती है।
- जहाँ सूर्य की किरणें सीधी आती हो वहाँ लैमिनेट शीट का उपयोग कम से कम करें - यह रंग को धुंधला कर सकता है।
- लैमिनेट शीट के रख-रखाव करते समय इस पर किसी प्रकार के रसायन पदार्थ का प्रयोग न करें। घर में रंग - रोगन करते समय SHEETS को ढक दें।
- लैमिनेट शीट का ROLL खोल कर रखें।
- लैमिनेट शीट को सीधे रख कर काटें।
- अधिक से अधिक स्थान पर MASKING TAPE का उपयोग करें।

उपरोक्त सावधानियों को ध्यान में रखकर लैमिनेट को काम में लेने पर काफ़ी समस्याओं का स्वतः ही समाधान मिल जाएगा।

CLEANING

- To clean the surface, use a damp cloth or sponge and a mild soap or detergent.
- Stains belonging to group 2 such as coffee or tea can be removed using a mild household cleaner/detergent and a soft bristle brush.

WARRANTY

VENTURA warrants that all its products are free from manufacturing defects and perfectly fit for use under normal conditions. The product must be inspected prior to installation. In case of any claims, the liability of the company is limited to the cost of the product only.





Ventura International Pvt. Ltd.



- [@Venturaintl](#)
- [in/Venturaint](#)
- [f/venturaintnl](#)
- [/user/venturaindia](#)