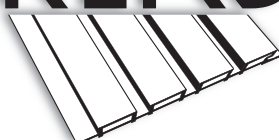


VENTURA[®]

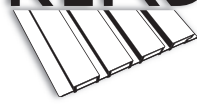
LEGNOKLADS



FUTURE OF FACADES

VENTURA[®]

LEGNOKLADS



**FIRST
IN INDIA**
With SYNCHRO
REAL WOOD
EMBOSSING



Water
Proof



Termite
Resistant



Fungus
Resistant



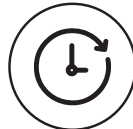
Impact
Resistant



Scratch
Resistant



Eco
Friendly



Long
Lasting

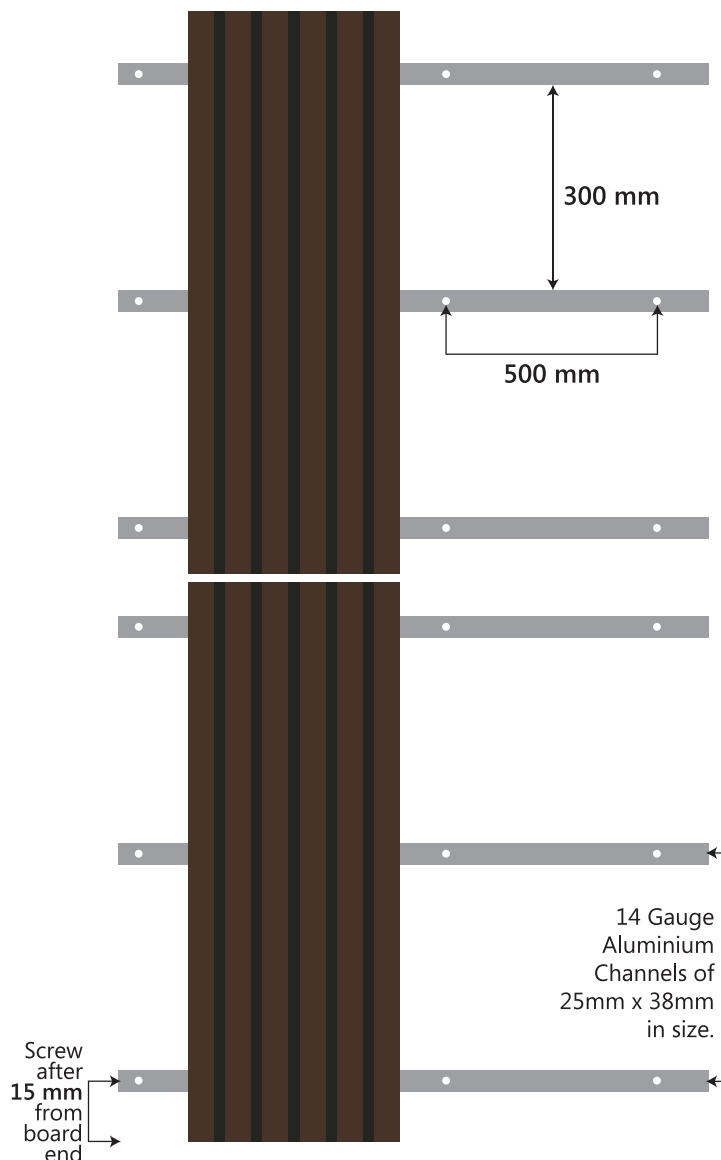


Weather
Friendly



Low
Maintenance

INSTALLATION INSTRUCTIONS

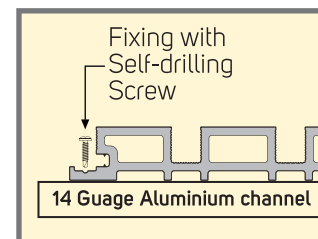


1. Fix the Aluminium Channels at a 300 mm interval to the wall with expansion screws. The spacing between two adjacent screws should be 500 mm.

2. Double Aluminium Channels are needed at the end-to-end joint between two cladding boards to ensure that each board is supported by Aluminium Channel.

3. Leave an expansion gap of about 8 mm between the ends of two cladding boards to avoid the risk of cracking and warping.

4. Always pre-drill pilot holes before driving screws to avoid damage to the cladding board.



IMPORTANT : VENTURA LegnoKlads should always be stored horizontally

- Powder coated End Profile as per requirement
- Installation should go from bottom to top

VENTURA[®]

LEGNOKLADS




* Scan this QR code for Warranty Terms & Conditions

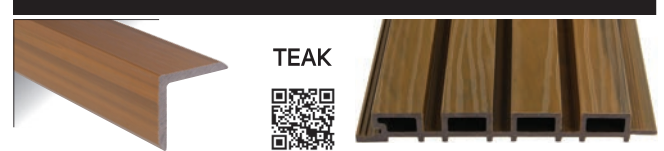
END PROFILES

COLOUR OPTIONS



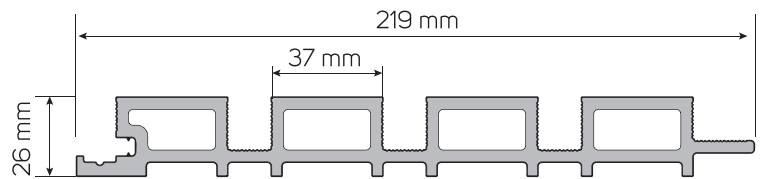
END PROFILES

COLOUR OPTIONS



ADVANTAGES

- Modern open-joint appearance
- Multi-chromatic colours
- Quick & easy to install
- Hollow Profile, High Strength
- Exceptional natural wood imitation
- 100% resistant to termites
- Large Bearing capacity with superior long service life
- High Grade Polymer Surface Coating
- Highly resistant to mildew, scratch, splintering and moisture
- Exceptionally adaptable to various weather conditions



TECHNICAL INFORMATION

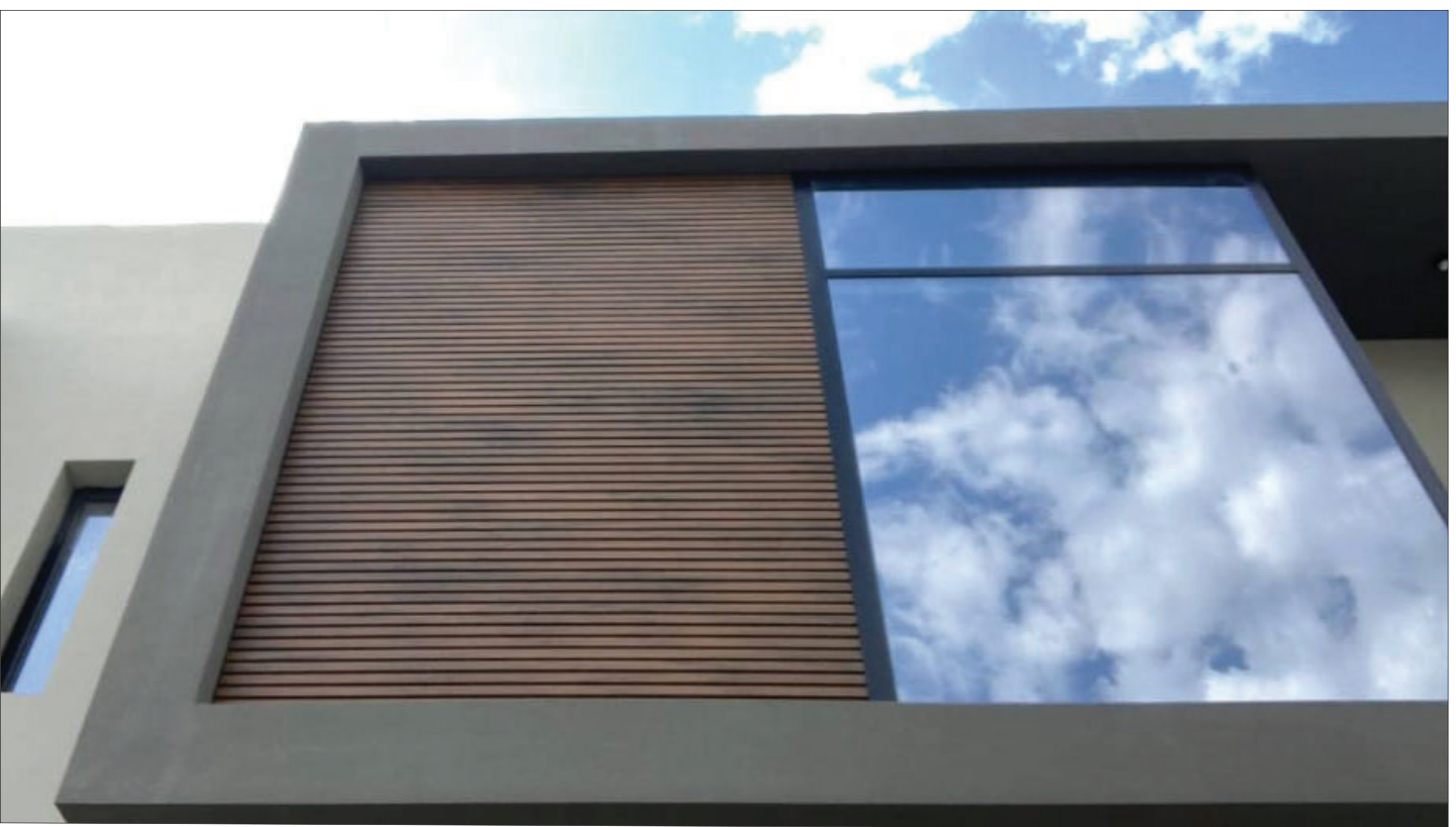
Total Length : 2900 mm (9' 6")	Number of waves per board : 4
Total Width : 219 mm (8.6")	Wave top width : 37 mm
Total Thickness : 26 mm (1.3")	Depth of waves : 18 mm
Density : 1.33 gms/cm ³	

END-PROFILE DIMENSION : 50 mm x 50 mm x 2900 mm



VENTURA[®]

LEGNOKLADS



VENTURA Since 1994 *beautifying lives*

Ventura International Pvt. Ltd.

Office • Architectural Experience Centre

1/120, W.H.S., Kirti Nagar, New Delhi-110015

Phone: 91-11-4554 6700 (100 Lines)

E-mail: mktg@venturaindia.com

Website: www.venturaindia.com



[f/venturaintl](https://www.facebook.com/venturaintl)

[yt/user/venturaindia](https://www.youtube.com/user/venturaindia)

[in/Venturaint](https://www.linkedin.com/company/Venturaint)

[@Venturaintl](https://www.instagram.com/Venturaintl)